

U.C.S.D  
Q-038  
LA JOLLA CIVIC UNIVERSITY  
SYMPHONY ASSOCIATION  
LA JOLLA, CA 92093

NON PROFIT ORG.  
U.S. POSTAGE  
PAID  
LA JOLLA, CA  
PERMIT 128

THE 1986-87 SEASON !



**Thomas Nee, Music Director**

**ORCHESTRA & CHORUS**

**David Chase, Choral Director**

**1986-87 SEASON**

Saturday, November 8, 1986, 8:00 P.M.

Sunday, November 9, 1986, 3:00 P.M.

Mandeville Auditorium, UCSD

**Opening Concert**

Thomas Nee, Conductor

David Korevaar, Pianist

Lukas Foss

Phorion

Sergei Rachmaninoff

Rhapsody on a Theme of

Paganini

Johannes Brahms

Symphony No. 4

The distinguished young San Diego pianist David Korevaar, now studying at Juilliard, returns for a welcome engagement on a program that includes Foss' witty *Phorion* (based on a Bach prelude) and Brahms' autumnal final symphony.

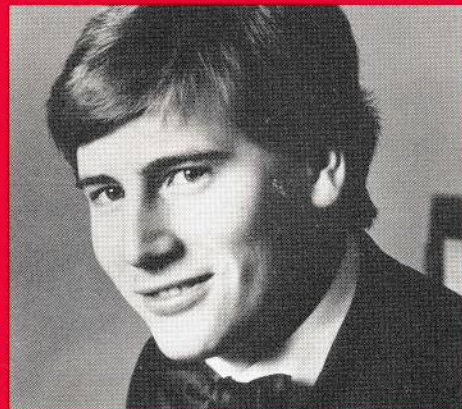
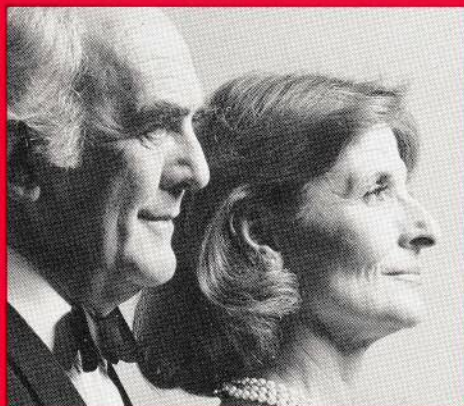


Photo: Peter Schaefer



Norman Welsh and Mary Corrigan read excerpts from Thomas' charming memories of his boyhood, interspersed with traditional Christmas music of England and Wales. On the second half, soloists, chorus, and full orchestra perform Vaughan Williams' Christmas cantata *Hodie* ("This Day").

Saturday, December 6, 1986, 8:00 P.M.

Sunday, December 7, 1986, 3:00 P.M.

Mandeville Auditorium, UCSD

**An English Christmas**

David Chase, Conductor

Norman Welsh and Mary Corrigan, Readers

St. Paul's Cathedral Choristers

Dylan Thomas

A Child's Christmas in Wales

English and Welsh Christmas Carols

Ralph Vaughan Williams

Hodie

Saturday, December 20, 1986, 1:00 & 4:00 P.M.

(Two performances)

St. James-by-the-Sea Episcopal Church

743 Prospect Street, La Jolla

**Annual Messiah Sing-along**

George Frideric Handel

Messiah

Always a standing-room-only event, the orchestra and chorus' annual sing-along of the Christmas portion of *Messiah* returns this year to St. James-by-the-Sea and will be offered twice on the afternoon of Saturday, December 20. *Bring your own score or purchase one at the door.*



Photo: Chuck Kimball



A program of brilliant music, offering Erik Satie's *Parade*, scored for an orchestra that includes typewriters, and Respighi's colorful evocations of Rome's magnificent fountains. The concert also features appealing works for voice and orchestra by two of this century's most famous composers from Poland and Mexico.

Saturday, March 14, 1987, 8:00 P.M.  
Sunday, March 15, 1987, 3:00 P.M.  
Mandeville Auditorium, UCSD

### International Brilliance

Thomas Nee, Conductor  
David Chase, Conductor

*Erik Satie*  
*Witold Lutoslawski*

*Silvestre Revueltas*  
*Ottorino Respighi*

*Parade*  
*Three Poems*  
of Henri Michaux  
*Hora de Junio*  
*Fountains of Rome*

Saturday, May 9, 1987, 8:00 P.M.  
Sunday, May 10, 1987, 3:00 P.M.  
Mandeville Auditorium, UCSD

### Scandinavian Composers

Thomas Nee, Conductor  
Zina Schiff, Violinist

*Robert Erickson*  
*Jan Sibelius*  
*Carl Nielsen*

*Variations for Orchestra*  
*Violin Concerto*  
*Symphony No. 2, "The Four*  
*Temperaments"*

The young violin virtuosa from San Diego, Zina Schiff, performs Sibelius' powerful concerto. The concert opens with the *Variations* of Swedish-American composer Robert Erickson (who retires this year from the faculty of UCSD) and concludes with the joyous *Second Symphony* of Danish composer Carl Nielsen.

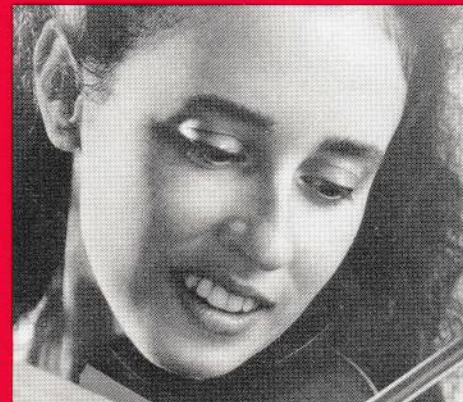


Photo: Joe Butts Photography

In an unusual program, the chorus and pianist Cecil Lytle, joined by an instrumental ensemble, perform choral favorites from American musicals, including *Porgy and Bess*, *Fiddler on the Roof*, *West Side Story*, and others.

Saturday, May 23, 1987, 8:00 P.M.  
Sunday, May 24, 1987, 3:00 P.M.  
Mandeville Auditorium, UCSD

### American Musical Theater

David Chase, Conductor  
Cecil Lytle, Pianist

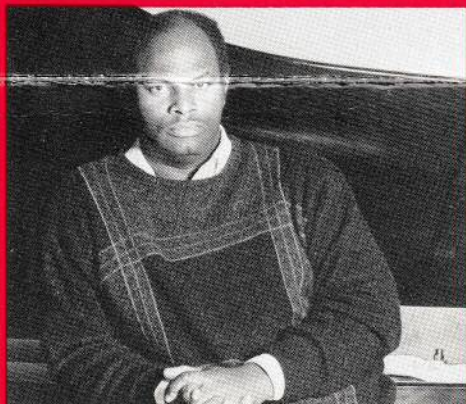


Photo: Wanda Tritem-Robbin

Sunday June 7, 1987, 3:00 P.M.  
Mandeville Auditorium, UCSD

### Young Artists Concert

Thomas Nee, Conductor

The year's traditional final concert features the winners of the Association's annual Young Artists Competition in solo performances with the orchestra.

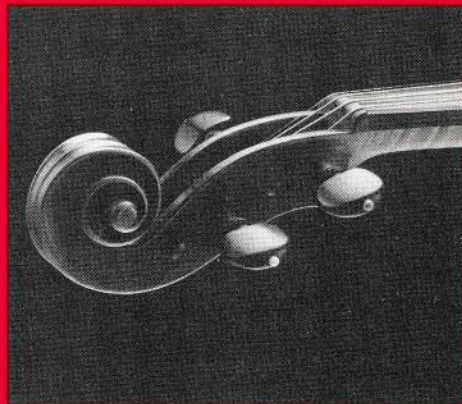


Photo: Chuck Kimball

David Chase leads the chorus in a program of music suited to cathedrals in the spacious acoustics of St. Paul's Cathedral. Tickets for this non-subscription event will be sold through the church, and information on how to obtain them will be published in the Association's program book.

*Special Non-Subscription Concert*  
Sunday, February 22, 1987 5:00 P.M.  
St. Paul's Cathedral  
2728 Sixth Avenue, San Diego

### Great Cathedral Music

David Chase, Conductor  
*Johann Sebastian Bach* Cantata No. 140,  
"Wachet Auf"  
*William Byrd* motets  
*Thomas Tallis* motets

*Programs and artists subject to change without notice.*

**LA JOLLA CIVIC-UNIVERSITY  
SYMPHONY ORCHESTRA AND CHORUS**

**1986-87 SEASON SUBSCRIPTION ORDER FORM**

In the 1986-87 season, the La Jolla Civic-University Symphony Orchestra and Chorus Association will offer seven concerts for the price of six. Your subscription includes tickets to both the *Messiah* sing-along and the Young Artists Concert and guarantees your seat for all other concerts as well. (Last year several of our concerts were sold out, and we had to turn people away.)

Subscription category	Number of subscriptions	Price for 7 concerts	TOTAL
Individual	_____	(x) \$30	= _____
Student with ID or Senior (60 and over)	_____	(x) \$18	= _____
		<b>Subtotal</b>	<b>\$</b> _____

**The cost of individual tickets is \$5 for adults,  
\$3 for students with ID and seniors (60 and over).**

We are able to offer such affordable ticket prices thanks to you, the Symphony Association, and the University of California San Diego Music Department. Your contribution helps guarantee the continuation of these concerts. (See separate page for contribution categories and benefits.)

**Tax-deductible donation** \$ \_\_\_\_\_

Make check payable to L.J.S.A. Thank you! **TOTAL** \$ \_\_\_\_\_

**SUBSCRIPTION INFORMATION**

Please renew my present seat(s), if possible.

I am renewing my subscription(s), but wish to change my seat(s), if possible, to:

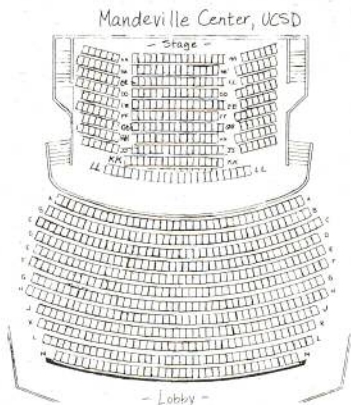
I am renewing my subscription(s), but wish to change my day of attendance to:  
Saturday  / Sunday .

Please seat me with:

I am a new subscriber and wish to be seated, if possible, in the following area:

and wish to attend on Saturday  / Sunday .

Please return the attached form by October 15th. Subscriptions will be processed in the order they are received. Tickets will be mailed in October.



**Name** \_\_\_\_\_

**Address** \_\_\_\_\_

**City/Zip** \_\_\_\_\_

**Home Phone** \_\_\_\_\_ **Work phone** \_\_\_\_\_

If you have any questions regarding your subscription, please call the Association at (619) 534-4637.

# LA JOLLA CIVIC-UNIVERSITY SYMPHONY ORCHESTRA AND CHORUS 1986-87 MEMBERSHIP CATEGORIES

## ASSOCIATE (\$25-\$49)

Priority seating for the Association's special events and concerts  
Ticket exchange privilege  
Invitation to Annual Dinner and voting privileges  
Listing in the opening night concert program

## DONOR (\$50-\$99)

All benefits listed above, plus:  
Private Donors Reception with musicians, soloists, and conductor

## CONTRIBUTOR (\$100-\$249)

All benefits listed above, plus:  
Program listing for all concerts  
Private Contributors Reception with musicians, soloists, and conductor

## SPONSOR (\$250-\$499)

All benefits listed above, plus:  
Attendance at a dress rehearsal of your choice  
Private Sponsors Reception with musicians, soloists, and conductor

## PATRON (\$500-\$999)

All benefits listed above, plus:  
Private chamber music performance in your home by orchestra musicians  
Private Dinner with the conductor of your choice

## CONCERT UNDERWRITER (\$1000 and above)

All benefits listed above, plus:  
Complimentary ad in the program for concert of your choice  
Conduct a selection at an orchestra or chorus rehearsal

*Subscribers and/or contributors of \$1-\$25 are also considered members of the Association.*



*What the critics said*

"The Krenek Festival came to a flamboyant close Sunday afternoon with a lot of people on the stage of the spacious Mandeville Auditorium . . . The valedictory enlisted three soloists and, where needed, Thomas Nee conducting ensembles of various combinations and permutations from the excellent La Jolla Civic-University Orchestra . . . (The orchestra performed the Nordenstrom work) with clarity and climactic tension."

— Martin Bernheimer  
*Los Angeles Times*  
December 15, 1985

"(The performance) only underscored that this community orchestra — as well as its audience — is as at home in 20th Century music as the average symphony is comfortable in a Rossini overture or a Beethoven symphony. This is its unique contribution to the local musical topography, a tribute both to the university's vision and to Nee's enlightened perseverance."

— Kenneth Herman  
*Los Angeles Times*  
March 11, 1986

"As last week's splendid performance demonstrated, happy the lover who falls in love with the *Symphony of Psalms* . . . David Chase and his excellent performing forces at Mandeville adhered much more closely to Stravinsky's explicit intentions . . . a deferential, meticulous performance, accurate in its literalness, yet with much of the deftness and subtlety of the composer's own recording."

Jonathan Saville  
*The Reader*  
June 5, 1986

"The ensembles, two orchestras, two choruses, and two jazz combos led by four conductors, do a passionate job, and carefully bring every disparate part of this chaos to colorful life. The recording, an even more crucial matter in such music, is intelligently done, and succeeds as well as anyone has a right to expect."

— Kyle Gann  
*Fanfare*, November/December, 1985  
(from the review of the orchestra  
and chorus' recording of  
Henry Brant's *Western Springs*)

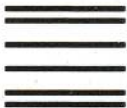
SEAL HERE

# The La Jolla Civic-University Symphony Orchestra and Chorus

NO POSTAGE  
NECESSARY  
IF MAILED  
IN THE  
UNITED STATES



FOLD HERE



**BUSINESS REPLY MAIL**

FIRST CLASS MAIL PERMIT NO. 261 LA JOLLA, CA 92037

POSTAGE WILL BE PAID BY ADDRESSEE

**University of California, San Diego  
La Jolla Civic Symphony Q-038  
3300 Miramar Road  
La Jolla, CA 92037-9986**

### INSTRUCTIONS:

1. Tear off at perforation.
2. Fold in half, insert enclosures, and seal outer edges (with tape or staples) where indicated.
3. Please be sure BUSINESS REPLY MAIL faces outward.

SEAL HERE



SEAL HERE