


LA JOLLA SYMPHONY & CHORUS

Affiliated with the University of California, San Diego



Harvey Sollberger
Music Director

Classics AND BEYOND



David Chase
Choral Director

Photos: Chris Jarakka

2001-2002 SEASON

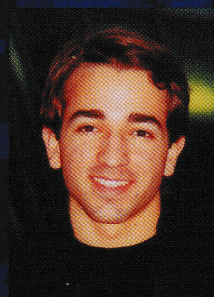
MUSIC FOR SMART PEOPLE

JOIN THE LA JOLLA SYMPHONY & CHORUS for one of the most amazing, wonderful, diverse, ear-pleasing, interesting, eclectic, classical and modern symphonic and choral concert seasons in recorded history!

WEEKEND IN PARIS

SEPTEMBER 29-30, 2001

Gershwin	<i>An American in Paris</i>	
Poulenc	<i>Gloria</i>	
Debussy/Peterson	<i>Songs</i>	
Rachmaninov	<i>Piano Concerto No. 2</i>	Bernard Bayer, Piano
Bizet	<i>Carmen Suite No. 1</i>	



Bernard Bayer, piano
2001 Young Artists
Competition Winner

Come celebrate the opening of our 47th season with a sparkling program of music on a French theme. The concert will include Gershwin's jaunty salute to the City of Light as well as favorites by Poulenc and Bizet. Featured soloist will be Young Artist Competition winner Bernard Bayer, who will be heard in Rachmaninoff's *Piano Concerto No. 2*

L'ALLEGRO!

NOVEMBER 10-11, 2001

Handel	<i>L'Allegro ed il Penseroso</i>
--------	----------------------------------

A true multi-media event—Choral Director David Chase leads (and discusses) a program that spotlights the work of three giants: Milton, Handel, and Blake. We'll hear a reading of Milton's masque *L'Allegro ed il Penseroso*, we'll see a slide presentation of the haunting Blake paintings it inspired, and we'll hear a performance of Handel's setting of Milton's text.

TRIUMPHANT BRAHMS

DECEMBER 8-9, 2001

Elliott Carter	<i>Three Occasions</i>	
Mendelssohn	<i>Violin Concerto</i>	Navroj Mehta, violin
Brahms	<i>Symphony No. 1 in C Minor</i>	

Brahms waited until he was 43 to write his *First Symphony*, then produced a work so powerful that it was hailed as "Beethoven's Tenth"—come discover why. Navroj Mehta is soloist in a much-loved concerto, and we celebrate Elliott Carter's 93rd birthday with three brief works.

THE TITAN

FEBRUARY 9-10, 2002

Myron Fink	<i>Klezmer Concerto</i> (World Premiere)	
Jude Weirmeir	LJS&C Thomas Nee Commission (World Premiere)	
Mahler	<i>Symphony No. 1 "The Titan"</i>	



2nd Avenue Klezmer Ensemble

Two world premieres and a concert favorite! We open with the premiere of San Diego composer Myron Fink's *Klezmer Concerto*, featuring the 2nd Avenue Klezmer Ensemble, and we conclude with Mahler's mighty *First Symphony*, which itself draws on the klezmer tradition. In between we offer the premiere of a new work by Jude Weirmeir, composed as part of our Thomas Nee Commission program.

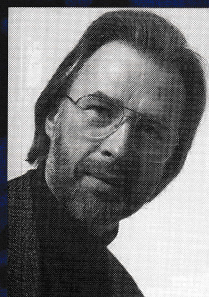
FROM THE EAST

MARCH 16-17, 2002

With guest conductor **Tomasz Bugaj, Artistic Director and Conductor of the Krakow Philharmonic**

Mieczyslaw Karlowicz *Lithuanian Rhapsody*
Karol Szymanowski *Stabat Mater*
Shostakovich *Symphony No. 1*

A most unusual concert—we welcome guest conductor Tomasz Bugaj, music director of the Krakow Philharmonic and a friend and colleague of Dmitri Shostakovich. Maestro Bugaj's program will include Szymanowski's moving *Stabat Mater* and Shostakovich's rousing *First Symphony*, written when he was 19.



Tomasz Bugaj

SYMPHONIES IN C

MAY 4-5, 2002

Stravinsky *Symphony in C*
Schubert *Symphony No. 9 in C Major "The Great"*

A century apart, Franz Schubert and Igor Stravinsky each wrote a *Symphony in C*, full of classical grace, strength, and beauty. We set these very different masterpieces side by side and let them shed radiant light on each other.

MAJESTIC MOZART

JUNE 8-9, 2002

Beethoven *Leonore Overture No. 3*
Chinary Ung *SAKRAVA "An Evening Song
for Orchestra"*
Mozart *Mass in C Minor*

Our season concludes with what many consider Mozart's greatest liturgical work, the powerful *Mass in C Minor*. Also on the program: Beethoven's overture in tribute to heroism, and a lyric work by UCSD composer Chinary Ung.



Priti Gandhi,
mezzo soprano
2001 Young Artists
Competition Winner

SPECIAL NON-SUBSCRIPTION CONCERTS

Handel **Christmas Messiah Sing** **December 1, 2001**
Handel **Easter Messiah Sing** **April 7, 2002**

A favorite! Join our annual sing of the Christmas portion of *Messiah* for the Holidays and the second annual sing of Parts II and III of *Messiah* for Easter time. Presented in the beautiful St. Elizabeth Seton Catholic Church, Carlsbad.

The La Jolla Symphony and Chorus is sponsored in part by the University of California, San Diego; the City of San Diego Commission for Arts and Culture; the County of San Diego; the California Arts Council; Qualcomm Incorporated; the Mandell Weiss Charitable Trust and the Parker Foundation.

Free pre-concert lecture one hour prior to each performance.

Program notes available at www.lajollasympphony.com

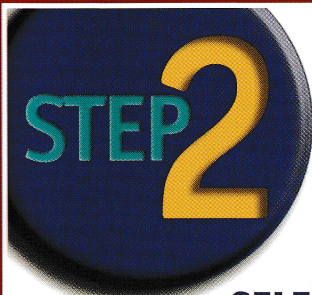
Programs and artists subject to change without notice. For more information call (858) 534-4637.

**DESIGN YOUR OWN
CONCERT SERIES.
CHOOSE ANY FIVE,
SIX OR SEVEN
CONCERTS**



**SELECT
PERFORMANCE
DATE**

- SATURDAY EVENING / 8 PM
 SUNDAY MATINEE / 3 PM



**SELECT
YOUR CONCERTS**

- Weekend in Paris
September 29/30, 2001
- L'Allegro!
November 10/11, 2001
- Triumphant Brahms
December 8/9, 2001
- The Titan
February 9/10, 2002
- From the East
March 16/17, 2002
- Symphonies in C
May 4/5, 2002
- Majestic Mozart
June 8/9, 2002



**PRICE
YOUR
PACKAGE**

	Standard Prices	PRICES Senior Prices	Student Prices
5 CONCERTS	\$80	\$65	\$45
6 CONCERTS	\$90	\$75	\$50
7 CONCERTS	\$100	\$85	\$55

NUMBER OF CONCERTS	NO. OF SEATS	X PRICE PER SEAT	TOTAL AMOUNT
			\$

SPECIAL ADDED FEATURE	NO. OF SEATS	X PRICE PER SEAT	TOTAL AMOUNT
CHRISTMAS MESSIAH SING EASTER MESSIAH SING Stu./Sen./Gen \$8/\$10/\$12			\$

TAX DEDUCTIBLE DONATION	\$
TOTAL AMOUNT	\$



**MAIL, FAX
OR CALL US**

BOX OFFICE HOURS: 10:00 A.M.-5:00 P.M.

Subscriber Information

- Renewing Subscriber New Subscriber

Method of Payment

- Enclosed check made payable to LJS&C Assoc.

Please charge my Visa MC

Card # _____ Exp _____

Name _____

Address _____

City _____ State _____ Zip _____

Phone: Day _____ Evening _____

Email Address _____

Mail or Fax this form to:

La Jolla Symphony & Chorus
UCSD 0361
9500 Gilman Drive
La Jolla, CA 92093-0361
Fax: 858-534-9947
www.lajollasympphony.com

Or, call us at 858-534-4637 to subscribe by phone.

Office Hours 9:00-5:00, Monday - Friday

SUBSCRIBER BENEFITS

- Up to 25% savings over single ticket prices
- Guaranteed same seats
- Easy ticket exchange by fax, mail or in person
- Priority notice of special events
- Special invitation reception with the conductors

JOIN THE LA JOLLA SYMPHONY & CHORUS FAMILY

Your contribution to the La Jolla Symphony & Chorus makes you a valuable participant in our organization. Sixty percent of our operating income comes from subscribers and donors like you. Your support is vital to our continuing:

- To perform innovative, exciting concerts unlike any others in San Diego.
- To encourage and reward young musicians through the annual Young Artists Competition and Concert.
- The Thomas Nee Commissioning Project, which commissions a new work from a talented young composer each year.
- Our Music Literacy Outreach program which brings music education and appreciation to San Diego school children.

Please join us in making great music!

SEASON UNDERWRITER

\$10,000+

CONCERT UNDERWRITER

\$5,000+

BENEFACTOR

\$1,500+

PATRON

\$1,000+

SPONSOR

\$500+

CONTRIBUTOR

\$250+

DONOR

\$100+

ASSOCIATE

\$50+

LA JOLLA SYMPHONY & CHORUS

Affiliated with UC San Diego

La Jolla Symphony & Chorus
UCSD 0361
9500 Gilman Drive
La Jolla, CA 92093-0361

Non-Profit
US Postage
PAID
Permit 1909
San Diego, CA



All concerts take place in Mandeville Auditorium on the campus of the University of California, San Diego. It is suggested that you park in Lot Number 207 on the west side of campus. Disabled parking is located in marked spaces in Lot 206, next to the faculty club, and —for concert times only—in the marked area along Mandeville Lane, off Gilman Drive.