

2013-2014 Season

La Jolla Symphony & Chorus

November 2-3, 2013 | Mandeville Auditorium

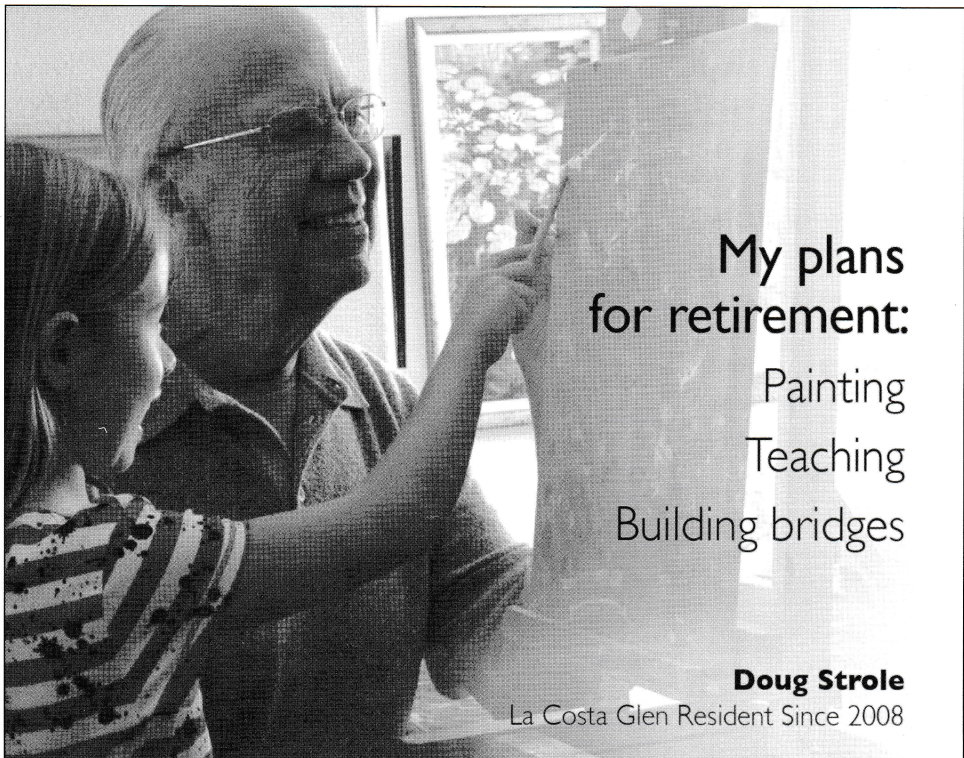


Life

**Celebrating Choral Director
David Chase's 40th Anniversary!**

Steven Schick
Music Director

David Chase
Choral Director



My plans for retirement:

Painting
Teaching
Building bridges

Doug Strole

La Costa Glen Resident Since 2008

Doug Strole has always been driven to get more out of life. That's why he's a former marathon runner, it's why he sold his first painting at 12 years old, and it's why he chose La Costa Glen over any other retirement community. But he never expected so many opportunities to give back — now Doug leads the art studio on campus, teaching classes and bringing together students of all ages, including his granddaughter, Makayla. And since he's erased any concerns about long-term care, Doug can focus on the art of living.

What can you expect at La Costa Glen?
Find out by calling us at **1-800-796-9589**
today to request your free comparison
chart, and see how much **more** you'll
get out of life at La Costa Glen.



La Costa Glen

CARLSBAD

A CONTINUING LIFE® COMMUNITY

Why Compromise?
Expect More.



Find us on
Facebook



State of California License #374600637
Certificate of Authority #201

1940 Levante St.
Carlsbad, CA 92009
LaCostaGlen.com

Steven Schick
Music Director



David Chase
Choral Director

sometimes a little scary,

Saturday, November 2, 2013, 7:30pm | Sunday, November 3, 2013, 2:00pm

Mandeville Auditorium, UCSD

Steven Schick conducting

MOZART
/arr. R. Levin

Sinfonia Concertante in E-flat Major

Allegro
Adagio
Andantino con variazioni

Soloists: International Contemporary Ensemble

David Byrd-Marrow, horn; Claire Chase, flute;
Nathan Davis, percussion; Rebekah Heller, bassoon;
Nick Masterson, oboe; Joshua Rubin, clarinet

VARÈSE

Density 21.5

Soloist: Claire Chase, flute

FUJIKURA

Mina

Soloists: International Contemporary Ensemble

INTERMISSION

BERLIOZ

Symphonie Fantastique, Opus 14

Reveries; Passions: Largo; Allegro agitato e appassionato assai
A Ball: Valse: Allegro non troppo
Scene in the Country: Adagio
March to the Scaffold: Allegretto non troppo
Dream of a Witches Sabbath: Larghetto; Allegro

Original cadenzas for Mozart's *Sinfonia Concertante* by Marcos Balter.

We wish to thank the San Diego Symphony for its loan of the chimes used in this concert.

Unauthorized photography and audio/video recording are prohibited during this performance.
No texting or cell phone use of any kind allowed.

We gratefully acknowledge our underwriters for this concert

Dr. Michael McCann / Drs. Joan Forrest & Michael Latz
Judy & Bob Gaukel / Dr. Robert Engler & Julie Ruedi

2013-2014
**Board of
Directors**

Officers

Stephen L. Marsh
President

Paul E. Symczak
Vice President

Jenny Smerud
Treasurer

Ida Houby
Secretary

Mark Appelbaum
Evon Carpenter
Gordon Clark
Frank Dwinell Jr.
Peter Gourevitch
Eric McCall
Catherine Palmer
Arthur Wagner

Ex-Officio

David Chase
Diane Salisbury
Steven Schick

Honorary Members

Eloise Duff
Dr. Will Ogdon
David Parris
Miller Puckette
Jeanne Saier

**Honorary
Artistic Board**

John Luther Adams
Claire Chase
Philip Glass
David Lang
Wu Man
Bernard Rands

**Mission
Statement**

Rooted in San Diego for over 50 years, the La Jolla Symphony and Chorus enriches our lives through affordable concerts of ground-breaking, traditional and contemporary classical music.

From the Conductor



How does a musician measure impact? A rousing *fortissimo*? A riveting concert? A laudatory review? How about forty years of steady achievement, with hundreds of concerts and thousands of devoted musical partners along the way? Such has been the impact of David Chase in his four decades with the La Jolla Symphony and Chorus.

Imagine forty years! Forty years of weekly rehearsals; forty years of commuting from Leucadia to La Jolla, forty years of score study. If you think that every month of those forty years might involve up to a hundred hours of work, then perhaps David's impact adds up to forty or fifty thousand hours of dedication to the La Jolla Symphony and Chorus. Strung end-to-end in 24 hour days, that amounts to nearly four full years of his life.

That's a lot of impact!

Indeed there have been forty years of the joyous moments of music—concerts, tours and recordings. And then there are the other joys, of the weddings, births and graduations involving his choristers. But there have also been forty years of caring for their troubles as well. That means forty years of problems and illnesses, and sometimes of funerals. With house calls by family physicians nearly non-existent nowadays, communities like ours are held together by clergy and by conductors like David Chase.

David's forty-year-long project with the La Jolla Symphony and Chorus has been marked by passion, both for the music he has made and for the institution he has served. It makes sense: he's a passionate guy. I've seen him bathed in sweat after a performance. And, I've seen the Irish temper rise from time to time. But I've never seen one conducting gesture, nor one musical decision or programming choice that was not intended to make the La Jolla Symphony and Chorus a more excellent ensemble or a more welcoming home to its musicians and audience. And in the final analysis all of that passion is channeled through his impeccable skills as a choral conductor. David has extraordinary ears and the rehearsal chops to make them count.

And what a colleague! In my short handful of years with the La Jolla Symphony and Chorus—a mere cup of coffee by his standard—he has been a steadfast partner. In my first season or so I was the most dangerous musical animal in the orchestral world—a neophyte conductor with big ideas. But David never blanched, and in spite of every good reason to do so, he never patronized me. Early on I proposed programming the Bernstein *Mass*, utterly without the faintest idea of the logistical peril with

which I was threatening all of us. He said simply, yes, let's do it, and joined me in six months of long meetings and the sleepless nights of worry as we worked through a mountain of problems and choices.

Above all, I have followed David's lead in the way he treats the La Jolla Symphony and Chorus not as a gig, but as a family. A warm, high-functioning family of community musicians and students. Families are great of course, especially when they are happy. And for a while I waited for the other half of the famous Tolstoy dictum about unhappy families to emerge. But the musical equivalent of drunken recriminations over Thanksgiving dinner never materialized. Thanks to David and to my predecessor, Tom Nee, we are a real and a happy family.

In light of the importance of family, it seems fitting that the season intended to honor forty years of impact will start with a concerto appearance by Ann and David's daughter Claire, and the International Contemporary Ensemble, the crackerjack group she founded

a decade ago. (Creative vision and a sense of musical adventure do seem to run in the family!) We'll perform the Mozart *Sinfonia Concertante* for winds and orchestra and offer the second only performance of Dai Fujikura's *Mina*, a concerto for flute, oboe, clarinet, bassoon and percussion that ICE premiered last year with the Seattle Symphony.

Over the course of the season we'll hear lots of great music, with an emphasis, as you might imagine, on choral music. I'll write more about that later. But right now, I will return to my original question: How does a musician measure impact? We answer that question with the title we have given our season: "Life." In David Chase's case that means a life full of concerts and community. It means a life of striving to be better at what we do and in return being kind to ourselves when we have given everything we can. It means a life spent making music and making friends, and the wisdom of knowing that you should never do one without doing the other.

Now that's what I call impact! Thank you, David. ■

Steven Schick conductor

For more than 30 years Steven Schick has championed contemporary music as a percussionist and teacher by commissioning and premiering more than 100 new works. Schick is a professor of music at the University of California, San Diego and in 2008 was awarded the title of Distinguished Professor by the UCSD Academic Senate.

Schick was one of the original members and percussionist of the Bang on a Can All-Stars of New York City (1992-2002). He has served as artistic director of the Centre International de Percussion de Genève in Geneva, Switzerland, and as consulting artist in percussion at the Manhattan School of Music. Schick is founder and artistic director of the acclaimed percussion group, red fish blue fish, a UCSD ensemble composed of his graduate percussion students that performs regularly throughout San Diego and has toured

internationally. He also is founding artistic director (June 2009) of "Roots & Rhizomes"—an annual international course for percussionists hosted by the Banff Center for the Arts in Canada.

As a percussion soloist, Schick has appeared in Carnegie Hall, Lincoln Center, The Royal Albert Hall (London), Centre Pompidou (Paris), The Sydney Opera House and Disney Hall among many other national and international venues.

Schick is a frequent guest conductor with the International Contemporary Ensemble (Chicago and New York City), and in 2011 he was appointed artistic director and conductor of the San Francisco Contemporary Music Players. Schick has been music director and conductor of the La Jolla Symphony & Chorus since 2007.

La Jolla Symphony & Chorus

Administrative Staff

Diane Salisbury
Executive Director

Adam Perez
Patron Services Manager

Beth Julsonnet
Development Associate

Melinda Sylva
Bookkeeper

Artistic Staff

R. Theodore Bietz
Orchestra Manager

Mea Daum
Chorus Manager

Yeung-ping Chen
Orchestra Production Asst.

Ulrike Burgin
Orchestra Librarian

Marianne & Dennis Schamp
Chorus Librarians

Outreach

Victoria Eicher
Marty Hambricht
Mary Ellen Walther

How To Reach Us

La Jolla Symphony & Chorus
9500 Gilman Drive
UCSD 0361
La Jolla, CA 92093-0361
Phone: 858.534.4637
Fax: 858.534.9947
www.LaJollaSymphony.com

Program Notes

by Eric Bromberger

Sinfonia Concertante in E-flat Major

WOLFGANG AMADEUS MOZART

Born January 27, 1756, Salzburg

Died December 5, 1791, Vienna



For generations this lovely music has been a favorite of audiences (and of wind-players!), but the *Sinfonia Concertante in E-flat Major* may not be by Mozart at all. A great deal of mystery continues to surround this music, and the twists and turns of that mystery are very interesting. In September 1777 Mozart and his mother set out on the long journey that would take them to Mannheim in western Germany and then on to Paris the following spring. Mozart loved Mannheim, with its excellent orchestra and superb soloists, and was reluctant to leave, but back in Salzburg father Leopold was anxious for him to try his fortunes in the City of Light. Mozart arrived in Paris on April 5, 1778, and quickly made contact with Joseph LeGros, the director of the Concert Spirituel. They agreed that Mozart would write several works for that series, and the young man set to work. He was particularly enthusiastic about one of these pieces, and he wrote it with some of Mannheim's musicians specifically in mind. To his father he wrote: "I am now going to compose a sinfonia concertante for flute, Wendling; oboe, Ramm; horn, Punto, and bassoon, Ritter."

Mozart appears to have completed this work by April 20, and then things turned sour. LeGros refused to perform the works Mozart had written for him, and—worse—he hung onto the manuscripts. Mozart described the situation to his father: "There appears to be a hitch with regard to the sinfonia concertante, and I think that something is going on behind the scenes and that doubtless here too I have enemies."

LeGros kept Mozart's manuscripts, and on October 3, 1778, Mozart wrote to his father: "He thinks that he alone has them, but he is wrong, for they are still fresh in my mind and, as soon as I get home, I shall write them down again." But Mozart got back to Salzburg in January 1779 in a very unhappy frame of mind: his mother had died in Paris, and the sixteen-month trip had brought him no position. There is no record of his having written down the lost manuscripts from memory, and in fact the *Sinfonia Concertante for Flute, Oboe, Horn, and Bassoon* vanished, never to be seen again.

Then, nearly a century later, a copy of a *Sinfonia Concertante for Oboe, Clarinet, Bassoon, and Horn* was discovered among the papers of the Mozart scholar Otto Jahn. Scholars were quick to assume that it must be an arrangement of the piece written in 1778, but there is nothing to confirm this. The copy was not in Mozart's hand, nor was there any explanation of where it had come from or of why the flute in the Paris version had been replaced by a clarinet. Could this arrangement date from another period, perhaps after Mozart had moved to Vienna and come into contact with the clarinetist Anton Stadler? Could it be by a different composer altogether? There are no conclusive answers to these questions, and we are left with a measure of mystery surrounding this work, including the question of who wrote it.

But the fact remains that this is very pleasing music, it certainly sounds like Mozart, and it appears to come from a time when he was interested in writing works for multiple soloists and orchestra. The *sinfonia concertante* was a form popular in the late eighteenth century that existed somewhere between a concerto and a symphony. It is similar to a concerto, but instead of setting an individual soloist with virtuoso display passages in opposition to the orchestra, a *sinfonia concertante* integrates its soloists—usually two or more—more fully into the orchestral texture: the soloists rise from the orchestra and then return to it.

Mozart's *Sinfonia Concertante for Violin and Viola* is one of the greatest examples, and Haydn and many others used the form during this period.

The *Sinfonia Concertante in E-flat Major* is scored for what might be called a "standard" orchestra of pairs of oboes and horns plus strings, but those modest forces are capable of making a grand sound. From the first instant of the *Allegro*, with its powerful opening gesture and quick dynamic contrasts, we feel the influence of the Mannheim school. The exposition, with its wealth of themes, is extended, and the four soloists make a firm unison entrance. The writing, here and throughout, is nicely suited to the individual character of those four instruments, and near the close comes a cadenza based on all this movement's themes.

The *Adagio* has been described as the glory of this music, but those who question the authenticity of this work note that Mozart almost never wrote a middle movement in the same key as the outer movements, and all three movements here are in E-flat major. But this is also the movement that sounds most like Mozart—it is glorious music, and special attention should be drawn to the entrance of the soloists, whose expressive music is marked *dolce* and sings with an Olympian grace. This movement might be described as accompanied chamber music: it belongs largely to the four soloists, and the accompaniment is understated.

The finale is in theme-and-variation form: a bucolic opening theme undergoes ten variations that spotlight the different soloists, sometimes individually, sometimes in combinations. In the extended *Allegro* coda, the opening theme is re-barréd from 2/4 to 6/8 (something Mozart liked to do), and this music dances home in a rush of shining energy.

NOTE: At these concerts, ICE performs the *Sinfonia Concertante* in a new arrangement for flute, oboe, horn, and bassoon that attempts to recreate what was apparently Mozart's original conception of the piece (reconstructed by Robert D. Levin.) ■

Density 21.5

EDGARD VARÈSE

Born December 22, 1883, Le Villars, Burgundy

Died November 6, 1965, New York City



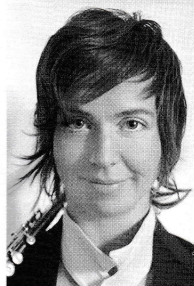
French-born Edgard Varèse considered himself an American composer, though he did not come to this country until 1915, when he was 28. One of the greatest innovators in the history of music, Varèse is nevertheless remembered for an

extraordinarily small body of work: his catalog lists only fifteen completed pieces. Varèse was a visionary, a composer who heard new sounds in his head and then searched—sometimes with great frustration—for the instruments and musical means to make those sounds heard. It was not until the invention of tape and electronically-generated sounds after World War II that Varèse found the freedom he had sought for so long—his term for this new music was “Organized Sound.” Varèse’s *Poème électronique*, played on 400 speakers spread throughout the pavilion Le Corbusier designed for the Philips Radio Corporation at the 1958 Brussels World’s Fair, brought him a measure of success and fame in the final years of his life.

Varèse’s *Density 21.5*, however, came from much earlier in his career. Varèse greatly admired the music of Debussy, and when he came to compose a work for solo flute, he inevitably was conscious

of Debussy’s *Syrinx*. Both *Syrinx* and *Density 21.5* are for solo flute, they are of about the same length, and the Varèse comes only 23 years after the Debussy. But they might be from widely-separated centuries, so different are they in mood, technique, and expression. Where the Debussy looks to the misty mythological past, the Varèse is very much of the present. Where the Debussy is restrained (the loudest dynamic in *Syrinx* is *mezzo-forte*) and dies away to nothing, the Varèse is built on violent contrasts, pitching between *pianissimo* and *fortississimo*. Where the Debussy is rhythmically very free (there were no bar lines in the manuscript), the Varèse is notated exactly; the composer admonishes the performer: “Always strictly in time—follow metronomic indications.” Where Debussy emphasizes the languorous, glowing sound of the flute, Varèse extracts a full range of contrasted sounds from the instrument.

Varèse wrote *Density 21.5* in January 1936 for the flutist Georges Barrère, who played a platinum flute. The density of platinum is 21.5, and this is the source of the name (whether the title should be adjusted when this music is played on flutes made of different metals is an issue Varèse did not address). The opening three-note figure will recur throughout *Density 21.5*, which drives—with increasing tension and more and more violent dynamic contrasts—to the piercing high B that brings the piece to its close. One of the many innovations in this music is Varèse’s instruction to the performer, about halfway through, to strike the keys of the flute in such a way as “to produce a percussive effect.” ■



Claire Chase flute

Claire Chase is active as a soloist, collaborative artist, curator and as CEO/founder of ICE. Over the past decade she has given the world premieres of more than

100 new works for solo flute, many of them tailor-made for her, and she has produced and curated more than 500 concerts of contemporary music. First Prize Winner of the

2008 Concert Artists Guild International Competition, she has given solo recitals recently at Weill Recital Hall at Carnegie Hall, Avery Fisher Hall, and throughout the US. Claire released her debut solo album in October 2009 on the New Focus Recordings label featuring world premieres by emerging composers, which was named one of the Top Ten Releases of the Year by TimeOut Chicago. In 2012, Ms. Chase was recognized with a MacArthur Fellow “genius award.”

Experience a fresh take
on American fare.



Prospect Street's Newest Scene

Savor American classics with a contemporary twist paired with an extensive wine menu, local handcrafted beers, creative cocktails and nightly live entertainment in a relaxed yet refined setting.

Lunch: 11:30 am – 3:00 pm

Dinner: 5:30 pm – 10:00 pm

Entertainment: 7:00 pm – 11:00 pm

Reservations: 858.750.3695 or
AmayaLaJolla.com



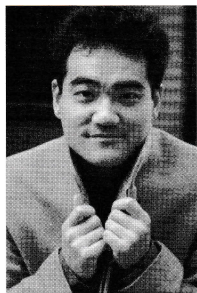
Amaya
LA JOLLA

1205 PROSPECT ST. • LA JOLLA, CA 92037

Mina

DAI FUJIKURA

Born April 27, 1977, Osaka, Japan



The composer has supplied a program note for this work:

This is the first piece I composed after the birth of my first child. I started a month after she ("Mina") was born.

When I completed the piece, she was a five-month-old baby!

I was truly inspired by attending the childbirth (not that I did anything there), especially by the sight of a newborn baby. I was amazed how one's life on earth starts so suddenly. This piece also begins as if it starts in the middle; the soloists play together at first, as if they were one instrument. I wanted to show how rapidly the mood of the music shifts from one mood to another, just as if you were looking at the baby's face, which displays four expressions in one second...

Also in the middle of the piece, the bass flute solo is accompanied by prepared dulcimer and bells and so on; I imagined it as a dreaming section. It is strange, looking at a one-month-old baby: you can tell clearly she

About ICE

With a flexible roster of 33 leading instrumentalists performing in forces ranging from solos to large ensembles, the International Contemporary Ensemble (ICE) functions as performer, presenter, and educator, advancing the music of our time by developing innovative new works and pursuing groundbreaking strategies for audience engagement.



PERFORMING THIS CONCERT

Joshua Rubin is a founding clarinetist and the Program Director of ICE. ♦ Percussionist and composer **Nathan Davis** makes music inspired by natural processes, acoustic phenomena, and the abstraction of simple stories. He has received commissions from ICE, the Calder String Quartet, the Ojai Festival (for Eighth Blackbird and an installation by sound-sculptor Trimpin), Ethos Percussion Group, TimeTable, and the Moving Theater Dance Company, and received awards from Meet The Composer's Commissioning Music/USA, the Jerome Foundation, American Music Center, MATA, the Argosy Foundation, ASCAP, and the ISCM. ♦ **Nick Masterson** is the Principal Oboist of the Pennsylvania Ballet Orchestra and a member of the Philadelphia Chamber Orchestra. Nick has been a member of ICE since 2003 and can be heard on the group's recording of John Adam's *Son Of Chamber Symphony* released on Nonesuch Records. ♦

Praised for her "flair" and "deftly illuminated" performances by the New York Times, bassoonist **Rebekah Heller** is a uniquely dynamic chamber, orchestral and solo musician. Equally comfortable playing established classical works and the newest of new music, she is a fiercely passionate advocate for the bassoon. ♦ **David Byrd-Marrow**, horn, received his bachelor's degree from The Juilliard School, where he studied with the late Jerome Ashby. For his master's degree, he went on to study with William Purvis at the State University of New York at Stony Brook. He was then selected for fellowship in the Juilliard-Carnegie Hall Academy Ensemble ACJW. He has also played with groups such as Carnegie Hall's "Zankel Band," The Orchestra of St. Luke's, The Orpheus Chamber Orchestra, The Tokyo Symphony, The New York and Atlanta Operas and The New York Philharmonic. ♦ **Claire Chase**, flute (see previous page).

is dreaming, but about what, I wonder. She has only been here for a month; what can she see, to make her smile or cry, so vivid is her dream. I found this experience both mysterious and peaceful, looking over the crib she is sleeping in.

Mina was commissioned by the Seattle Symphony Orchestra and co-commissioned by Bamberg Symphony Orchestra and Nagoya Philharmonic Orchestra. This piece was written for an orchestra with five soloists who are from ICE—a chamber ensemble with whom I have long-standing relationship and with whom I can work most intimately. Despite the fact we have a vast ocean between us (I live in London, ICE is in New York), we communicated via

Skype and email, recording samples on phones and computers and sending them back and forth; I felt as if they were in my room in London while I composed. I think that this is the best composer-player relationship you can ask for!

The orchestra's role is to surround the soloists, almost like parents do to their children; they react, sometimes initiate the reaction, sometimes there are five different concerti playing simultaneously with specific coupling between the solo instrument and orchestral instruments.

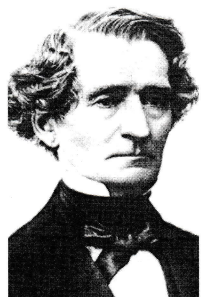
So obviously this piece was written in very special time of my life. ■

Symphonie Fantastique, Opus 14

HECTOR BERLIOZ

Born December 11, 1803, La Côte-St-André

Died March 8, 1869, Paris



It is impossible for modern audiences to understand how revolutionary Berlioz's *Symphonie Fantastique* was when it burst upon surprised listeners in Paris in 1830. The music

has become so over-familiar that we forget that it represented not only a brilliant new use of the orchestra but also an entirely new conception of the role of the composer. For Berlioz subtitled this symphony "Episode in the Life of an Artist" and based it on details of his own life. And what made the symphony so sensational was that these autobiographical details were so lurid, private, and painful. No longer was music an abstract art, at some distance from the psyche of its maker. When Berlioz created the nightmare journey of the *Symphonie Fantastique* out of his own internal fury, the art of music was all at once propelled into a new era.

In 1827 an English acting troupe visited Paris, where their performances of Shakespeare created a sensation. Nowhere did these performances have more impact than on a 23-year-old music student named Hector Berlioz, who was as much smitten with the company's leading lady, Harriet Smithson, as he was with Shakespeare. Berlioz himself recalled the effect of watching the actress play the part of Juliet: "It was too much. By the third Act, hardly able to breathe—as though an iron hand gripped me by the heart—I knew I was lost." Berlioz resolved on the spot to marry Harriet Smithson and soon mounted a concert of his own works as a way of attracting her attention; she never even heard of the concert. Plunged into the despair of his own helpless love, Berlioz came up with the idea that would—after much revision—become the *Symphonie Fantastique*: he would depict in music the nightmare mental adventures of a love-stricken young musician who took opium as a way to escape his pain.

Such an idea carries with it all sorts of dangers for unbridled self-indulgence, but in fact the *Symphonie Fantastique* is a tightly-disciplined score. Its unity comes from Berlioz's use of what he called (borrowing the term from the psychology of his day) an *idée fixe*, or "fixed idea"; today we would call it an obsession. In the symphony, this

obsession takes the form of a long melody which Berlioz associates with his beloved. This melody appears in each of the symphony's five movements, varied each time to suit the mood of the movement and the mental state of the suffering hero.

Berlioz, an unusually articulate writer, provided program notes of the symphony that are still worth quoting in detail (Berlioz's notes are in italics in the following paragraphs):

A young musician of unhealthily sensitive nature and endowed with vivid imagination has poisoned himself with opium in a paroxysm of lovesick despair. The narcotic dose he had taken was too weak to cause death, but it has thrown him into a long sleep accompanied by the most extraordinary visions. In this condition his sensations, his feelings, and his memories find utterance in his sick brain in the form of musical imagery. Even the Beloved One takes the form of a melody in his mind, like a fixed idea which is ever returning and which he hears everywhere.

First Movement: Dreams, Passions. At first he thinks of the uneasy and nervous condition of his mind, of somber longings, of depression and joyous elation without any recognizable cause, which he experienced before the Beloved One had appeared to him. Then he remembers the ardent love with which she suddenly inspired him; he thinks of his almost insane anxiety of mind, of his raging jealousy, of his reawakening love, of his religious consolation

The movement's opening, with murmuring woodwinds and muted strings, depicts the artist drifting softly into the drugged dream-state. The animated *idée fixe* theme, the musical backbone of the entire symphony, is soon heard in the first violins and flute. This undergoes a series of dramatic transformations (this opening movement is in a sort of sonata form) before the movement closes on quiet chords marked *Religiosamente*.

Second Movement: A Ball. In a ballroom, amidst the confusion of a brilliant festival, he finds the Beloved One again.

Berlioz here creates a flowing waltz, beautifully introduced by swirling strings and harps. Near the end, the music comes to a sudden stop, and the *idée fixe* melody appears in a graceful transformation for solo clarinet before the waltz resumes.

Third Movement—Scene in the Fields. It is a summer evening. He is in the country, musing, when he hears two shepherd lads who play, in alternation, the ranz des vaches (the tune used by the Swiss shepherds to call their flocks). This pastoral duet, the quiet scene, the soft whisperings of the trees stirred by the zephyr wind, some prospects of hope recently made known to him, all these sensations unite to impart a long unknown report to his heart and to lend a smiling color to his imagination. And then She appears once more. His heart stops beating, painful forebodings fill his soul. "Should she prove false to him!" One of the shepherds resumes the melody, but the other answers him no more... Sunset... distant rolling of thunder... loneliness... silence...

The *Scene in the Fields* is one of Berlioz's most successful examples of scene-painting, perhaps inspired by Beethoven's *Pastoral Symphony*, but nothing like it musically. The dialogue of the shepherds' pipes to the accompaniment of distant thunder is a particularly imaginative touch; the *idée fixe* is heard during the course of the dreamy summer afternoon in the woodwinds.

*Fourth Movement: March to the Scaffold. He dreams that he has murdered his Beloved, that he has been condemned to death, and is being led to execution. A march that is alternately somber and wild, brilliant and solemn, accompanies the procession. The tumultuous outbursts are followed without modulation by measured steps. At last the *idée fixe* returns, for a moment a last thought of love is revived, which is cut short by the deathblow.*

This is the most famous music in the symphony, with its muffled drums giving way to the brilliant march. At the end, the solo clarinet plays a fragment of the *idée fixe*, then the guillotine blade comes down as a mighty chord from the orchestra;

pizzicato notes mark the severed head's tumble into the basket.

Fifth Movement: Witches Sabbath. He dreams that he is present at a witches' revel, surrounded by horrible spirits, amidst sorcerers and monsters in many fearful forms, who have come together for his funeral. Strange sounds, groans, shrill laughter, distant yells, which other cries seem to answer. The Beloved Melody is heard again, but it has lost its shy and noble character; it has become a vulgar, trivial and grotesque dance tune. She it is who comes to attend the witches' meeting. Riotous howls and shouts greet her arrival. She joins the infernal orgy. Bells toll for the dead, a burlesque parody of the Dies Irae. The witches' round dance. The dance and the Dies Irae are heard together.

Here is a nightmare vision in music: the horrible growls and squeaks of the beginning give way to the grotesque dance for witches and spirits. Berlioz here takes his revenge on the Beloved, who had scorned him: her once-lovely tune is made hideous and repellent. The orchestral writing here is phenomenal: bells toll, clarinets squeal, the strings tap their bowsticks on the strings to imitate the sounds of skeletons dancing.

The first performance of the *Symphonie Fantastique* on December 5, 1830 (six days before the composer's 27th birthday) was a mixed success: the work had its ardent defenders as well as its bitter enemies. The storybook climax of this whole tale was that Harriet Smithson finally recognized the composer's great passion for her, and they were married three years later. If this all sounds a little too good to be true, it was—

the marriage was unhappy, the couple was divorced, and Harriet died after a long struggle with alcohol.

But this in no way detracts from the musical achievement of the *Symphonie Fantastique*: Berlioz looked deep within the nightmare depths of his own agonized soul and found there the material for a revolutionary new conception of music, music that was not an artistic abstraction but spoke directly from his own anguish, and he gave that torment a dazzling pictorial immediacy. Composers as different as Liszt, Tchaikovsky, Mahler, and Richard Strauss were among the many who would be directly influenced by this new conception of what music might be. ■

In Memory of Joan Forrest

The La Jolla Symphony & Chorus said good-bye to a dear friend in July with the passing of Joan Forrest. Joan played violin in the orchestra for 30 years, served two terms on the board of directors, and with her husband Michael Latz co-chaired our Wine Tasting fundraiser for five years. Joan was a force of nature, with a smile and attitude that defied the illness she battled for seven years. She remained a staunch supporter of LJS&C to the end. She and Michael are among the sponsors of this weekend's performances, which are dedicated to her memory.

A Special Thanks to

Robert Whitley

Syndicated Wine Columnist

Publisher of

www.winereviewonline.com

for his generous donation of fine wines
for LJS&C events this season.

La Jolla Symphony & Chorus
would like to thank...



City of San Diego
Commission for Arts & Culture



County Board of Supervisors
Offices of Ron Roberts and Dave Roberts

For their support of our 2013-2014 season.

NO. 3
THE NEW RULES OF RETIREMENT

*Your home should be a place
you'd want to write home about.*



Welcome to elegant living located minutes from white sandy beaches and the crystal blue ocean. Our inspiring community offers elegant décor, gourmet dining and the liberation from household chores. Not to mention the presence of a beautifully appointed, on-site care center, should the need arise. Join us, and start making these next years the best of your life.

**Call 888.323.9984 for a private tour or take a virtual tour at
ViLiving.com/LaJollaVillage.**



AT LA JOLLA VILLAGE

**Redefining
SENIOR
LIVING**

8515 Costa Verde Boulevard, San Diego, CA 92122

LJSC0313



Certificate of Authority #189 • RCFE License #374600675 • SNF License #080000751 • CCW La Jolla, L.L.C., and CC-La Jolla, Inc., d/b/a Vi at La Jolla Village, are the sole entities responsible for the performance of the continuing care contracts at Vi at La Jolla Village.

La Jolla Symphony Orchestra

Founded in 1954 by Peter Nicoloff

Steven Schick, *Music Director*

R. Theodore Bietz, *Orchestra Manager* | **Ulrike Burgin**, *Orchestra Librarian* | **Yeung-ping Chen**, *Production Assistant*

Violin I

Peter Clarke,
Co-Concertmaster
David Buckley,
Co-Concertmaster
Angelo Arias
Evon Carpenter
Amy Darnell
Pat Gifford
Bram Goldstein
Susanna Han-Sanzi
Marianne Laleuf-Thom
Jonathan Ma
Jeanne Saier
Catherine Shir
Ted Tsai
Alexander Wang

Violin II

Andy Helgerson, *Principal*
Marit Chrislock-Lauterbach,
Assistant Principal
Aram Akhavan
Carol Bietz
Gary Brown
Carolyn Chen
Ciara Dabkowski
Vivian Han
Stephanie Kim
Clarence Mah
Brad Peters
Arielle Straus

Viola

Daniel Swem, *Principal*
Nancy Swanberg,
Assistant Principal
Loie Flood
Anne Gero-Stillwell
Ari Le
Roark Miller
Sheila Podell
Thaddeus Wiktor

Cello

Caitlin Fahey, *Principal*
Max Fenstermacher,
Assistant Principal
Alana Borum
Ulrike Burgin
Bryan Cassella
Curtis Chan
Jonathan Ho
Carolyn Sechrist
Clifford Thrasher
Carol Tolbert

Contrabass

Christine Allen, *Principal*
Scott Steller,
Assistant Principal
Darrell Cheng
Bill Childs
Pat Fitzpatrick
Stephan Gentillalli
Lance Guowa
Jessica Kovach
Timothy McNalley

Flute/Piccolo

Joey Payton, *Principal*
Erica McDaniel

Oboe

Carol Rothrock, *Principal*
Heather Marks

English Horn

Heather Marks

Clarinet

Jenny Smerud, *Principal*
Fran Tonello

Bassoon

Tom Schubert, *Principal*
Daniel Freilich
William Propp
Jim Swift

Contrabassoon

William Propp

Horn

Nicolee Kuester, *Principal*
David Ryan, *Assistant Principal*
Ryan Beard
Jonathan Rudin
David Tuttle

Trumpet

Ken Fitzgerald, *Principal*
Rachel Allen,
Associate Principal
Tim Brandt
Julie Lees

Trombone

R. Theodore Bietz, *Principal*
Devin Burnworth

Bass Trombone

Jonathan Hammer

Tuba

Kenneth Earnest, *Principal*
Andrew Allen

Timpani

Ryan Nestor

Percussion

Ryan Nestor, *Principal*
David Han-Sanzi
Sandra Hui
Neil Ruby
Peter Schmeeckle

Harp

Donna Vaughan
Laura Vaughan

web design

ACTING

video

LITERATURE

TAKE YOUR **NEXT** **STEP**
extension.ucsd.edu

brewing

PHOTOGRAPHY

mobile media

MUSIC

art history

animation

PAINTING



UC San Diego | Extension

La Jolla Symphony & Chorus | 2013-14 Season

Life*

Celebrating Choral Director
David Chase's 40th Anniversary!

utterly ecstatic,
Saturday, December 7 at 7:30pm
Sunday, December 8 at 2:00pm
Mandeville Auditorium, UCSD

**Chorus and Orchestra
Perform a Concert of
Magnificence and Color!**

Steven Schick conducts

AARON JAY KERNIS

Musica Celestis

PAUL HEMBREE

Ikarus-Azur

NEE COMMISSION

MAURICE RAVEL

Daphnis et Chloe

SPONSORS:

Bloor Family | Kastner Family



TICKETS: 858-534-4637 OR WWW.LAJOLLASYMPHONY.COM

Sponsor Support for the 2013-2014 Season:



Major funding provided by the
City of San Diego Commission
for Arts and Culture and the
County of San Diego



QUALCOMM

Contributors

The La Jolla Symphony & Chorus Association is deeply grateful to the Department of Music at UC San Diego for its generous support and assistance. The association would also like to acknowledge the generosity of its chief benefactress

Therese Hurst, who upon her death in 1985 left her estate to the association providing an endowment.

LJS&C thanks the following contributors for their support of the 2013-2014 season.

The La Jolla Symphony & Chorus Association is a 501(c)3 non-profit corporation, making your donation tax-deductible.

To support the Association, please send donations to the LJS&C at
9500 Gilman Drive, UCSD 0361, La Jolla, CA 92093-0361 or call 858-534-4637.

The LJS&C makes every effort to ensure that our contributors' names are listed accurately.

If you find an error, please let us know and we will correct it.

Annual Giving

*Donations listed below were received
October 9, 2012 - October 8, 2013.*

Major

Sponsor \$25,000+

City of San Diego,
Commission for Arts & Culture
Department of Music, UCSD

Season

Underwriter \$15,000+

Anonymous

Angel 10,000+

Michael & Nancy Kaehr
Amee Wood & Eric Mustonen

Benefactor \$5,000+

San Diego County
Board of Supervisors
William B. Lindley (*bequest*)
Dr. Michael McCann
Brenda & Steven Schick
Robert Whitley & Diane Salisbury

Sustainer \$2,500+

Betty Scalice Foundation
Maxine Bloor
Eric & Pat Bromberger
Dr. Robert Engler & Julie Ruedi
Beda & Jerry Farrell
Rexford & Joan Kastner
Julie & Don MacNeil
Drs. Bill Miller & Ida Houbuy
Steve & Janet Shields
Jim Swift & Suzanne Bosch-Swift
Francis Tonello
Arthur & Molli Wagner

Supporter \$1,500+

Peter & Maureen Brown
J. Lawrence Carter

Curtis & Mae Chan
David Clapp & Gayle Barsamian
Bernard Eggertsen &
Florence Nemkov
Paul & Clare Friedman
Marty Hambright
Sonya Hintz
Ted & Beverly Kilman
Monique Kunewalder
Tom & Barbara Peisch
Jeanne & Milton Saier
David D. Smith
Randy & Trish Stewart

Associate \$1,000+

Mark & Suzanne Appelbaum
Mary Berend
Walt Burkhard &
Patricia Finn Burkhard
Gordon & Lauren Clark
Julia Croom
Donald & Frances Diehl
Dr. & Mrs. Frank Dwinell, Jr.
Noel & Victoria Eicher
Kurt & Dorothy Hummeldorf
Drs. Andrew King & Diane McKay
James & Lois Lasry
Michael Latz & Joan Forrest*
Stephen L. Marsh
McKenna Long & Aldridge
Nancy Moore
Carol Plantamura & Felix Prael
C. Glasson Schmidt
Scott & Jenny Smerud

Patron \$500+

Dan & June Allen
George & Sarilee Anderson
Gary & Susan Brown
John & Evon Carpenter
Jack & Judy Cater
Carolyn Chase
Ann & Walter Desmond
Kenneth Earnest
Drs. Einar & Sally Gall

Ryan Gamble & Erica McDaniel
Michael & Meryl Gross
John & Alice Ho
Janet Merutka
Mary Nee
Bob & Catherine Palmer
Nolan & Barbara Penn
Fredrick & Beverly Price
Manuel & Paula Rotenberg
Jonathan & Judy Rudin
Vanya Russell
Tom Schubert
Barry & Jan Sharpless
Otto Sorensen & Mary Gillick
Paul Symczak & Debra Weiner
Susan & Mark Taggart
Ted & Anna Tsai
Frederick Walker &
Katharine Sheehan

Member \$250+

David Buckley &
Beth Ross Buckley
Nelson & Janice Byrne
P.E. & N.E. Caine
Glenn Casey &
Rochelle Kline-Casey
R.A. & C.A. Clarke
David & Ann Chase
Mea & Gaelen Daum
Joel & Nancy Dimsdale
Thomas & Julia Falk
Ken Fitzgerald
Bill & Cathy Funke
Bill & Sharon Griswold
Louis C. & Celia K.
Grossberg Foundation
Peter Jorgensen & Karen Johns
Dr. & Mrs. Mack Marby
Raymond & Deborah Park
David & Thelma Parris
Nolan & Barbara Penn
Carol Rothrock
Alex & Valerie Rubins
Bill & Jeanne Stutzer
Nancy Swanberg

Susan & Mark Taggart
Henry & Irene Weber

Friend \$100+

Charlotte Albrecht
Joseph & Susan Allen
Michael & Christine Allen
Georgios & Myrtali
Anagnostopolous
Marian Archibald
Angelo Arias
Mary Beebe & Charles Reilly
Robert Bergstrom
Steve Bernstein
Amy Binder & Edward Hunter
Nancy Bojanic
Roland Blantz
Cathy Blickenstaff
Gene & Denise Blickenstaff
Tim Brant
Susan Brown
Sonja Brun
George Burgin
Frances Castle
Chris & Bridget Celentino
Scot A. Cheatham
Bobbi Chifos
Peter & Megan Clarke
Peggy Clapp
Joe & Ramona Colwell
Joyce Cutler-Shaw & Jerome Shaw
Lois Day
Todd Dickenson
Edward & Edith Drcar
F.F.D
Karen Erickson
Darrell & Dorothy Fanestil
George & Elsa Feher
Jeko Fetvadjiev
Jerry & Barbara Fitzsimmons
Janet Fraser
Sharon & Gene Friedman
Ed & Wita Gardiner
Cam Garner
Robert & Judy Gaukel
J.M. & Barbara Gieskes
Jim Goode & Andrea Gilbert
Stephen & Civia Gordon
John J. & Mary A. Griffin
Inga Grove
Gabrielle Ivany
David & Nancy James
Don Jenkins
Thomas Jroski
Karen Kakazu
Katherine Kaufman
G.F. & Aleta Kerth
Stephanie Kim
David Kimball
Ashley Knutson
Edith Kodmur

Igor Korneitchouk
Mr. & Mrs. James Lauth
Constance Lawthers
Ari Le
Mark Lewkowicz
Carl & Claudia Lowenstein
Robin & Charles Luby
Alan & Renate Ludecke
Dr. & Mrs. Warren Marsh
Robin Mayfield
Judy Manuche
Marty Marion
Mona McGorvin
Robert & Jan McMillan
Rebecca Mendoza
Marion Mettler
Jim & Sally Mowry
Charles Joe Mundy
Roark Miller
Elizabeth Newman
Marianne Nichols
John & Barbara Noyes
Nessa O'Shaugnessy
Ina Page
Perrie Patterson
Warren & Mary Margaret Pay
Joey Payton
Cinda Peck
Bill Paxton
Alan Peterson
Ethna Piazza
Ann E. Pitzer
Sheila Podell
Rebecca Ramirez
Robert & Diane Reid
Sean Reusch
Milton Richlin
Sue B. Roesch
Barbara Rosen
Coreen Sammon
Valerie Schierl
Brian & Sherri Schottlaender
Gerald H. Seifert
Bill & Gigi Simmons
Jack & Bonnie Sipe
Mitzi Sobash
Eva Sorlander
Dr. & Mrs. Hans Spiegelberg
Harold & Lambertha Stier
Phyllis Strand
Pamela Surko
Irving & Arlene Tashlick
Suzy & Harold Ticho
Patricia Traylor
Johanna Thompson
Carol Tolbert
Ruth & Dennis Turner
Jessica Varnado-Swall
Helen Wagner
Dr. & Mrs. Peter Walther
Sarah Warisi

Ellen Warner-Scott
Warwick's
Robert Wennerholt
Lawrence Woolf
David & Elke Wurzel
Gloria Xefos
Elena Yarritu & Ehud Kedar
Bill Ziefle
Barl Ziegler

**Therese Hurst
Planned Giving
Society**

Colin & Maxine Bloor
Sue & James Collado
Kempton Family Trust
William B. Lindley
Drs. Bill Miller & Ida Houby
Richard & Glenda Rosenblatt
David D. Smith
Amee Wood & Eric Mustonen

Corporate Gift Match

Intuit
Northrup Grumman
Qualcomm

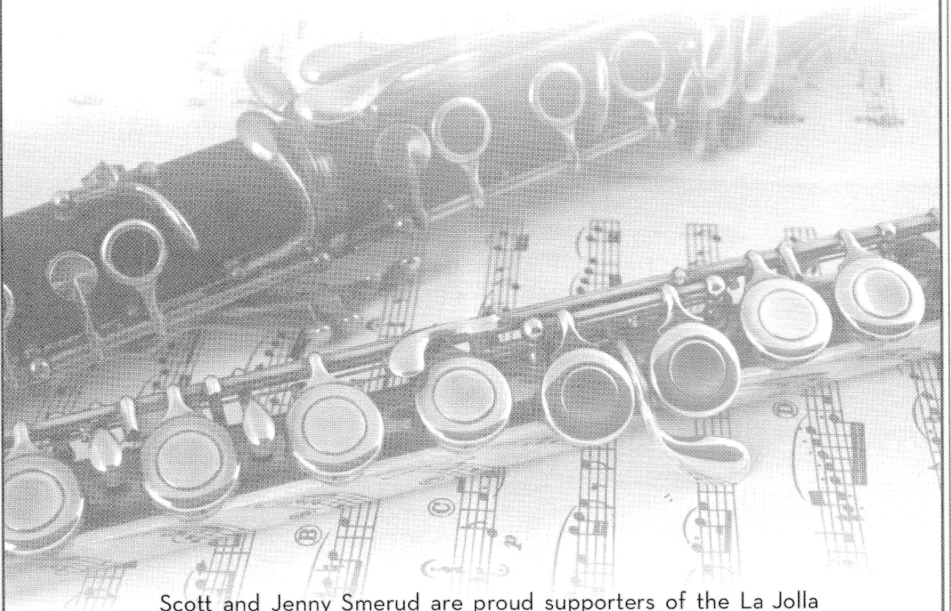
Endowment Gifts

Anonymous
Dan & June Allen
Ellen Bevier
John & Evon Carpenter
J. Lawrence Carter
David & Ann Chase
Ann & Walter Desmond
Donald & Frances Diehl
Dr. & Mrs. Frank Dwinell, Jr.
Gordon & Lauren Clark
Gerald & Beda Farrell
Paul J. & E. Clare Friedman
Peter Gourevitch
Neil & Clarice Hokanson
Drs. Andrew King & Diane McKay
Monique Kunewalder
Esther LaPorta
Julie & Don MacNeil
Stephen L. Marsh
Dr. Michael McCann
Drs. Bill Miller & Ida Houby
Nancy Moore
Mary Nee
Milton & Jeanne Saier
Brenda & Steven Schick
Tom Schubert
Scott & Jenny Smerud
Paul E. Symczak & Debra Weiner
Amee Wood & Eric Mustonen

*deceased



SMERUD
REAL ESTATE



Scott and Jenny Smerud are proud supporters of the La Jolla Symphony & Chorus. Jenny has played clarinet with the orchestra for eleven years, and served on the board for five years.

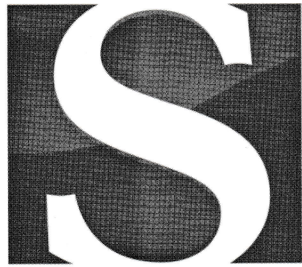
We are pleased to donate \$500 for every referred sale.

Scott Smerud, Realtor & Attorney

760.644.1484

Scott@SmerudRealEstate.com | www.SmerudRealEstate.com

BRE# 01913576



SMERUD
REAL ESTATE



Scott and Jenny Smerud are proud supporters of the La Jolla Symphony & Chorus. Jenny has played clarinet with the orchestra for eleven years, and served on the board for five years.

*We are pleased to donate \$500 for
every referred sale.*

Scott Smerud, Realtor & Attorney

760.644.1484

Scott@SmerudRealEstate.com | www.SmerudRealEstate.com

BRE# 01913576