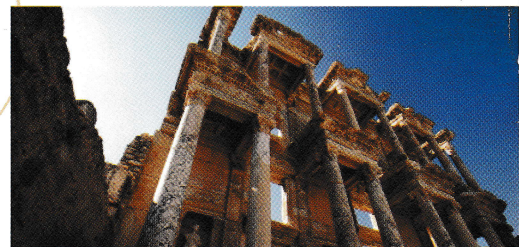
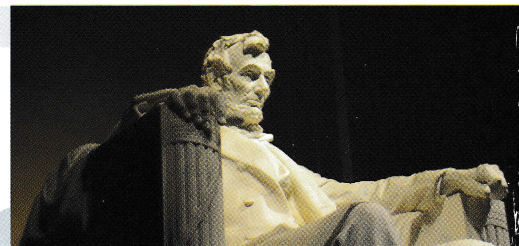
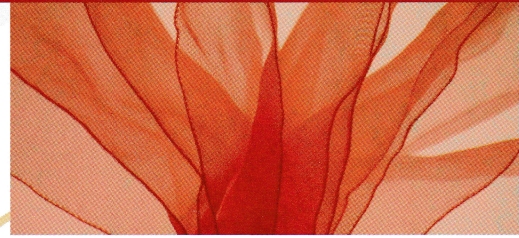


The DNA of Music

LA JOLLA SYMPHONY & CHORUS
2008-2009 SEASON

TIME
MOTION
HOME
PERSPECTIVE
PASSION
HOPE



Steven Schick Music Director | David Chase Choral Director

Remember when you created the home of your dreams?

At The White Sands of La Jolla retirement community, our residents continue to create wonderful lives for themselves. Free of the burdens of home maintenance, they're making friends, taking classes and pursuing their passions. They've found the freedom they've always wanted in our beachfront community, and the peace of mind that comes with our full spectrum of care.

Give us a call at (858) 450-5203 to discover your dream home on the sand.

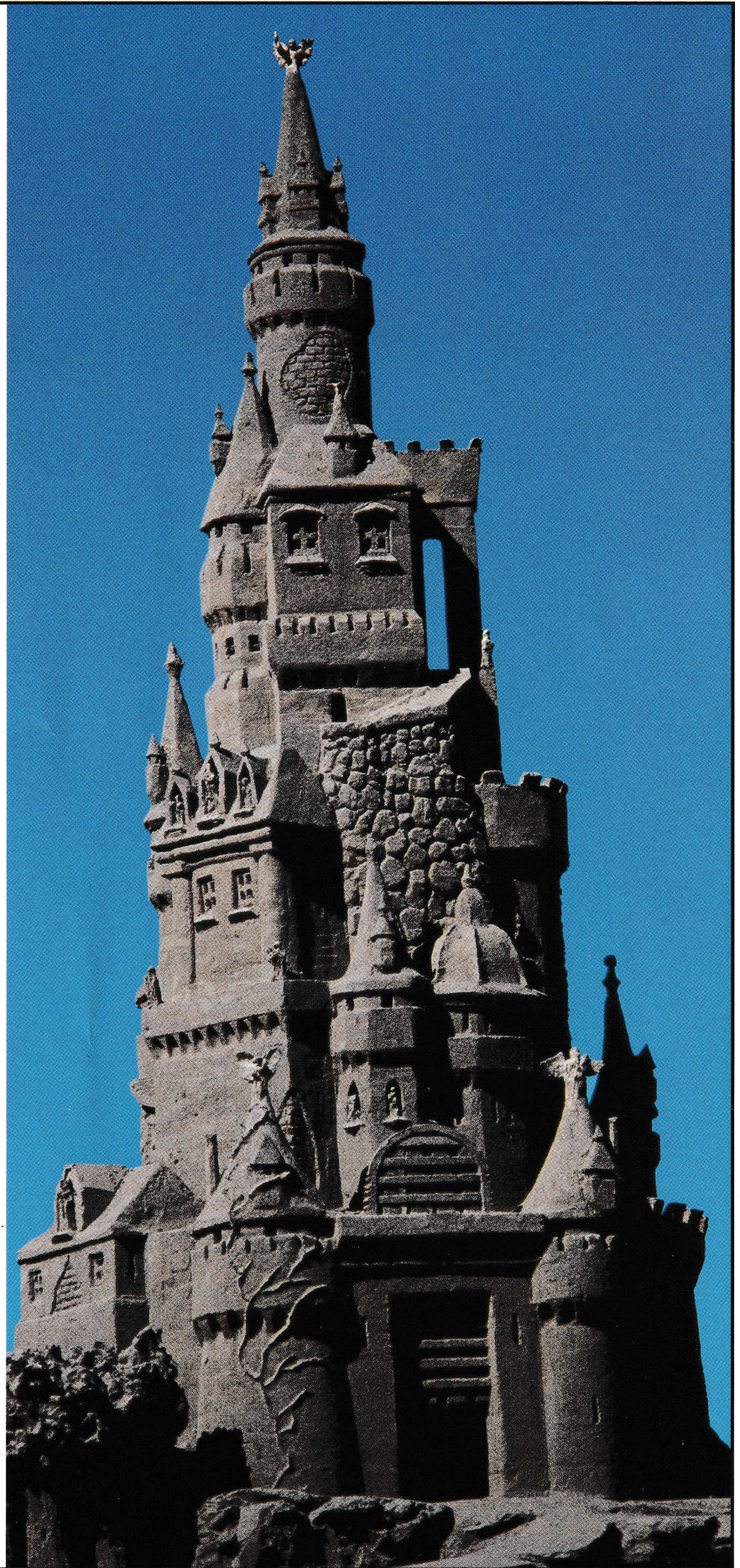
The
**WHITE
SANDS**
of LAJOLLA

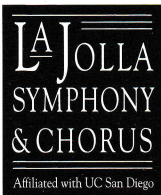
7450 Olivetas Ave.
La Jolla, CA 92037
(858) 454-4201
www.whitesandslajolla.com



A community of
SCPH
SOUTHERN CALIFORNIA
PRESBYTERIAN HOMES

License #372000641 COA #056





Steven Schick, *Music Director*
David Chase, *Choral Director*

PASSION

Mandeville Auditorium, UCSD
Saturday, May 2, 2009, 8PM
Sunday, May 3, 2009, 3PM

Steven Schick conducting

BEETHOVEN

Elegiac Song, Opus 118

ELGAR

Cello Concerto in E Minor, Opus 85

Adagio; Moderato
Lento; Allegro molto
Adagio
Allegro; Moderato; Allegro, ma non troppo

Maya Beiser, cello

INTERMISSION

BEETHOVEN/GRIFFITHS **The General**

Philip Larson, narrator
Alexis Grenier, soprano



Major funding provided by the
 City of San Diego Commission
 for Arts and Culture.



**During this performance, unauthorized audio
 and/or video recording are prohibited.**

We gratefully acknowledge
Ida Houby & Bill Miller
for underwriting this concert.

FROM THE CONDUCTOR



The great French film director François Truffaut once said about Alfred Hitchcock that “he filmed his love scenes like murder scenes and his murder scenes like love scenes.” I

imagine that this accounts for the unnerving quality of much of Hitchcock, but I also believe that this odd cross-wiring produces the enormous energy and tension in his films. In this weekend’s concerts, called “Passion,” we are attempting a cross-wiring of our own as we present a new way to look at older music. The musical sounds themselves will be utterly classical, but by placing unusual combinations and contexts within a traditional sound world we hope to enliven the classical with the breath of the modern.

There are few more beloved works for cello and orchestra than Edward Elgar’s *concerto*. This piece marks the culmination of a tide of romanticism in music for cello and equally provides some of the most memorable and beautiful music to be found anywhere in compositions for orchestra. The straightforward beauty of the piece is made more poignant by its contradictions—its own brand of cross-wiring. Elgar doesn’t seem to be able to give himself over to the luxury of a simple statement. The “pretty” music in the *concerto* is often interrupted by melancholy; moments of playfulness seem to harbor dark secrets. Maybe this is because Elgar, writing at the end of World War I, saw the destruction not just of lives but of a way of life. It was as though cannons had destroyed canons. As a result any interpretation of this concerto must find both its beauty and its sadness; its roots in history and its eyes towards the future.

This foundational view of Elgar is underscored by our decision to ask the great cellist Maya Beiser to join us as soloist. Ms. Beiser is among the most sought after contemporary cellists working in the world today. Her own background is as embedded in contrasts as Elgar’s *concerto*. Growing up in a Kibbutz in Israel, she routinely heard the call to prayer from the

STEVEN SCHICK

conductor

Steven Schick was born in Iowa and raised in a farming family. For the past thirty years he has championed contemporary percussion music as a performer and teacher, by commissioning and premiering more than one hundred new works for percussion. Schick is Distinguished Professor of Music at the University of California, San Diego and a Consulting Artist in Percussion at the Manhattan School of Music. In 2008 Schick received the "Distinguished Teaching Award" from UCSD. He was the percussionist of the Bang on a Can All-Stars of New York City from 1992-2002, and from 2000 to 2004 served as Artistic Director of the Centre International de Percussion de Genève in Geneva, Switzerland. Schick is founder and Artistic Director of the percussion group, "red fish blue fish," and in 2007 assumed the post of Music Director and conductor of the La Jolla Symphony & Chorus.

Steven Schick recently released three important publications. His book on solo percussion music, "The Percussionist's Art: Same Bed, Different Dreams," was published by the University of Rochester Press; his recording of *The Mathematics of Resonant Bodies* by John Luther Adams was released by Cantaloupe Music; and, a 3 CD set of the complete percussion music of Iannis Xenakis, made in collaboration with red fish blue fish, was issued by Mode Records. Steven Schick has appeared as a percussion soloist in Carnegie Hall, Lincoln Center, The Royal Albert Hall (London), Centre Pompidou (Paris), The Sydney Opera House and Disney Hall (Los Angeles) among many other national and international venues.

Mosque in a nearby Arab village. She often practiced Bach accompanied by the strains of tango drifting from her Argentine father's record player. She is, more than any musician I know, capable of rendering the beauty, the intensity and the complexity of today's cultural mix. Furthermore by asking her to bring her contemporary, cross-cultural ears and musical orientation to Elgar, we hope to hear the piece for what it really is: not simply a standard of the repertoire but a great composer's valedictory essay on the past and his tentative first steps towards an uncertain future.

The General is like-wise a cross-wiring of the old and the new. There has been no tampering with the music of Beethoven. The passages from *Egmont*, *King Stephen* and others are rendered precisely as the composer wrote them. But they serve now as a setting for a text of searing and contemporary relevance. The words spoken by Philip Larson are drawn from "Shake Hands with the Devil," a book by General Roméo Dallaire, the Canadian leader of the UN peacekeeping mission in Rwanda in 1994. For 500 pages we read of General Dallaire's idealism and selflessness in the face of one of the most horrifying chapters in recent history. By creating a text drawn from a book about Rwanda and combining it with the music of Beethoven, author and critic Paul Griffiths has mated music of unassailable virtue with a story that plumbs the depths of human misery. *The General* leaves neither Beethoven nor Rwanda unaffected. We are asked to see that Beethoven was a product of the politics and problems of his time, and we are also asked to see nobility and even art in the least likely of places. A cross-wiring, indeed.

We are calling this concert "passion." And it is easy to see that as the title of a concert that would feature Maya Beiser playing Elgar or the stirring music of Beethoven. But inlaid here are also the seeds of doubt. Both Elgar and Griffiths (via Beethoven) speak of the dangers of misplaced passion, of unbridled, uncontained and irrational passion. I always imagined that this concert would offer us a way to think about passion, both as a statement of art and as a tool of war. But how were we to know when we programmed this concert 18 months ago that the passions and excesses of the financial world would also be on our minds now, and would provide yet another source of relevance? It is for relevance that we are searching in these concerts. We are used to seeing classical music as a lens directed towards the past, the cool, distant, barely relevant past. A past that Robert Penn Warren once described as "heat lightning": still in our mind's eye, but long absent of any real zap. What Griffiths and Beiser; Beethoven and Elgar show us is that the past often lurks just around the next corner. And it is as full of electricity as ever. ■



Administrative Staff

Diane Salisbury, *Executive Director*
Adam Perez, *Patron Services Manager*
Alejandra Iniguez, *Box Office*
Melinda Sylva, *Bookkeeper*

Artistic Staff

R. Theodore Bietz, *Orchestra Manager*
Mea Daum, *Chorus Manager*
Jacob Sokal, *Orchestra Production Assistant*
Ulrike Burgin, *Orchestra Librarian*
Marianne & Dennis Schamp, *Chorus Librarians*

Outreach

Victoria Eicher, *Director*

How to Reach Us

Mandeville Center, B120
9500 Gilman Drive, UCSD 0361
La Jolla, CA 92093-0361
Phone: 858.534.4637 Fax: 858.534.9947
www.LaJollaSymphony.com

PROGRAM NOTES

BY ERIC BROMBERGER

Elegiac Song, Opus 118

LUDWIG VAN BEETHOVEN

Born December 16, 1770, Bonn

Died March 26, 1827, Vienna



Beethoven was a difficult tenant, and he alienated many landlords. He would bang on the piano at any hour of the night or fly into rages about real or imagined slights, and it comes as no surprise to learn that he moved very often. One of Beethoven's friends noted: "Scarcely was he established in a new dwelling when something or other displeased him, and he walked himself footsore to find another." Given this, it is remarkable that Beethoven managed to stay at one address in Vienna for ten years: from 1804 to 1814 he rented rooms from Johann Baptist von Pasqualati, a physician and amateur musician, and the two men became friends.

Pasqualati's wife died in childbirth in 1811, and in 1814—on the third anniversary of her death—Beethoven wrote a setting for four voices and string quartet of an anonymous poem with a very simple text:

*Sanft wie du lebstest
Hast du vollendet
Zu heilig für Schmerz!
Kein' Auge wein'
Ob des himmlischen Geistes Heimkehr.*

*Tender as thou lived,
So thou died,
Too holy for sorrow!
No eye can weep
At the homecoming of a heavenly soul.*

The *Elegiac Song*—or *Elegy*, as it is sometimes called—can be presented by any multiple of the original forces, and at these concerts it is performed by full chorus and string section.

What makes this little-known music remarkable is that it shows so many elements of Beethoven's late style, a style that would not fully come together until about 1820. In fact, it sounds very much like a slow movement from one of the late quartets: it has the same heartfelt intensity, rhythmic complexity, prominence of the inner voices, sharp dynamic contrasts, and melodic lines sustained over long spans. It is too much to say that Beethoven's late style begins with the *Elegiac Song*, but this brief piece shows many features of the music that would come from his remarkable final years.

Beethoven and Pasqualati remained friends after the composer moved to different lodgings, and their friendship survived until the end. As Beethoven lay dying in 1827 and barely able to eat, Pasqualati came often to visit, bringing gifts of the food—stewed peaches and cherries—that were particular favorites of his longtime friend. ■

A Bowl for Bowser

La Jolla
Symphony
& Chorus

The DNA
of Music
2008-2009 SEASON
www.lajollasympphony.com

**Now Everyone in your Household
can be a Fan!**

La Jolla Symphony & Chorus'
Online Store

lets you shop for a variety of
LJS&C logo items and purchase
just the size, color and quantity you want.

It's easy.

Visit www.lajollasympphony.com
and click on the red shopping bag.
You will be linked to our online store
and dozens of ways to celebrate
the 2008-09 season while
supporting our orchestra and chorus!

The Therese Hurst

Musical Heritage Society

In recognition of patrons who have included the La Jolla Symphony & Chorus in their estate plans, the Therese Hurst Musical Heritage Society, named after our chief benefactress, has been created. Please let us know how you have included the La Jolla Symphony & Chorus in your gift plans so that we can thank you and recognize your exceptional support for the future of community music-making.

For more information,
please contact
Diane Salisbury,
executive director,
at 858-822-3774.

La Jolla Symphony & Chorus is a
501(c)3 non-profit corporation.



Maya Beiser

cello

Maya Beiser has captivated audiences worldwide with her virtuosity, eclectic repertoire, and relentless quest to redefine her instrument's boundaries. Over the past decade, she has created new repertoire for the cello, commissioning and performing many works written for her by today's leading composers. She has collaborated with composers Tan Dun, Brian Eno, Philip Glass, Osvaldo Golijov, Steve Reich, Louis Andriessen, and Mark O'Connor among many others.

Ms. Beiser is a featured performer on the world's most prestigious stages, having appeared recently at the Sydney Opera House, New York City's Lincoln Center, the World Expo in Nagoya, Japan, and in Barcelona, Paris, Tokyo, Shanghai, and San Francisco. She has drawn widespread acclaim for her multimedia concerts, including *World To Come*, presented as part of the inaugural season of Zankel Hall at Carnegie Hall; *Almost Human*, chosen by *The New York Times* as among the "Best of 2006" musical events; and most recently, *Provenance*, a 70-minute presentation in which live music and original texts in Ladino, Arabic, Hebrew and Latin are woven together to create an all-encompassing musical tapestry.

Her recent appearances with orchestras have included the St. Paul Chamber Orchestra, the Montreal Symphony, the Brooklyn Philharmonic, the Sydney Symphony, and the China Philharmonic. She has released four solo CDs with Koch Entertainment label including *Oblivion*, *Kinship*, *World To Come* and *Almost Human*.

Ms. Beiser was raised on a kibbutz in Israel by her French mother and Argentinean father; for her compulsory military service, she became a member of the Israeli Army String Quartet. A graduate of Yale University, Maya's major teachers were Aldo Parisot, Uzi Weizel, Alexander Schneider, and Isaac Stern. She was the founding cellist of the new music ensemble, the Bang on a Can All-Stars.

Accommodations for Ms. Beiser
sponsored in partnership with:

ESTANCIA 
LA JOLLA
HOTEL & SPA

Cello Concerto in E Minor, Opus 85

SIR EDWARD ELGAR

Born June 2, 1857, Broadheath

Died February 23, 1934, Worcester



The period of World War I was extremely difficult for Elgar. The war was demoralizing, and Elgar—who turned 60 during its course—was further downcast by poor health and his own declining productivity. The war might seem the sort of occasion that should have roused his creative spirits, but Elgar had no appetite

for "war" music. After three years of war, he wrote to a friend while on a conducting tour: "I am not well and the place is so noisy & I do not sleep. The guns are the quietest things here. I long for the country... Everything good & nice & clean & fresh & sweet is far away—never to return." In the fall of 1917 he resolved to get away from London, and—after an operation to remove his tonsils—he rented a thatched two-story cottage outside Fittleworth, in the rolling countryside north of Chichester. The house had belonged to a painter, and now Elgar took over the painter's old studio in the garden. Delighted by the quiet and the surrounding woods, he felt his creative powers return. From the waning months of the war came a sudden surge of creativity: he wrote three chamber pieces—the *Violin Sonata*, *String Quartet*, and *Piano Quintet*—in 1918, and that August he set to work on a *Cello Concerto*, completing it in the early summer of 1919. It would be his final significant work. Though he planned several major compositions over the final fifteen years of his life, he was unable to complete any of them.

The *Cello Concerto* is a work of great beauty and great contradiction. Some of these contradictions rise from the sharp differences of style within the music: Elgar scores the concerto for a large orchestra, but then uses it with restraint—much of this music has a chamber-like delicacy. These contrasts point to sharp differences of mood within the music, which can move from a touching intimacy one moment to extroverted concerto style the next. We almost sense two completely different composers behind the concerto. One is the public Elgar—strong, confident, declarative—while the other is the private Elgar, torn by age, doubt, and the awful comprehension that all the certainties he had known—artistic, political, and social—had been obliterated. This strange division of mood lies at the heart of Elgar's *Cello Concerto*, which remains one of the most important written for the instrument.

We seem to hear the old confident Elgar in the cello's sturdy opening recitative, marked *nobilmente*, yet at the main body of the movement things change completely. Without any accompaniment, violas lay out the movement's haunting main theme, which rocks along wistfully on its 9/8 meter. This somber idea sets the mood for the entire opening movement—even the second subject, announced by pairs of woodwinds, is derived from this theme. Throughout, Elgar reminds the soloist to play *dolcissimo* and *espressivo*.

The first movement is joined to the second by a brief pizzicato reminiscence of the opening recitative, and the solo cello tenta-

tively outlines what will become the main theme of the second movement, a scherzo marked *Allegro molto*. Once this movement takes wing, it really flies—it is a sort of perpetual-motion movement, and Elgar marks the cello's part *leggierissimo*: "as light as possible." Tuneful interludes intrude momentarily on the busy progress, but the cello's breathless rush always returns, and the movement races to a sudden—and pleasing—close.

The *Adagio* returns to the mood of the opening movement. Metric units are short here (the marking is 3/8), but Elgar writes long, lyric lines for the soloist, who plays virtually without pause. There is a dreamy, almost disembodied quality to this music, and Donald Francis Tovey caught its mood perfectly when he described the *Adagio* as "a fairy tale." The finale has an extended introduction, combining orchestral flourishes, bits of the opening recitative, and a cadenza for the soloist, before plunging into the main part of the movement, marked *Allegro, ma non troppo*. This is launched with some of the old Elgarian swagger, and the music at first seems full of enough confidence to knit up the troubled edges of what has gone before. But this is only a first impression. Beneath the jaunty surface of this music, another mood—dark and uneasy—begins to intrude and finds its clearest expression in the extended *Poco più lento* section near the end of the music. Gone is the swagger, gone is the confident energy, and we sense that in place of the music Elgar wanted to write he is giving us the music he *had* to write. Wandering, pained, dis-eased, this music seems to speak directly from the heart, and even the vigorous concluding flourish does little to dispel the somber mood that has touched so much of this concerto. ■

Become a LJS&C Sponsor!

LJS&C offers many named sponsorship opportunities that show your support. Following are just a few of the named sponsorships available.

Young Artists Soloist Sponsor
\$750

**Staff Singer or
Principal Chair Sponsor**
\$1,800

Concertmaster Chair Sponsor
\$2,000

Concert Sponsor
\$2,500+

Guest Artist Sponsor
\$3,000+

To receive a complete list of naming opportunities or to choose a sponsorship for an upcoming concert or season, please contact Executive Director Diane Salisbury at 858-822-3774.

 **UC San Diego | Extension**

Make a Risk-Free Investment

Training = Increased Salary & Marketability

- ▶ **Keep Your Skills Current**
 - ▶ **Advance or Change Your Career**
 - ▶ **Network, Network, Network**
 - ▶ **Enjoy the Learning Experience**

Explore
600 Courses,
80 Certificate
Programs, and
four Master's
Degrees.

Enroll online today!

extension.ucsd.edu



PAUL GRIFFITHS

Paul Griffiths was born in Bridgend, Wales, in 1947. He studied biochemistry at Oxford, and joined the editorial team of *The New Grove* in 1973. Around the same time he began writing on music for various London papers; he was chief critic of *The Times* of London (1982-92) and *The New Yorker* (1992-6), and wrote regularly for *The New York Times* (1996-2003). His first book, *A Concise History of Modern Music*, came out in 1978, and has been translated into several languages, including French, Dutch, Japanese, Portuguese, and Welsh. His other books on music include studies of Boulez, Cage, Messiaen, Ligeti, Davies, Bartók, Stravinsky, Barraqué, and the string quartet, as well as the *Penguin Companion to Classical Music* (2005) and *A Concise History of Western Music* (2006). Among his fictional writings are novels—*Myself and Marco Polo* (1989 Commonwealth Writer's Prize), *The Lay of Sir Tristram* (1991), *let me tell you* (2008)—and several librettos, among them *The Jewel Box* (Mozart, 1991), *Marco Polo* (Tan Dun, 1996), and *What Next?* (Elliott Carter, 1999), and *The General* (2007).

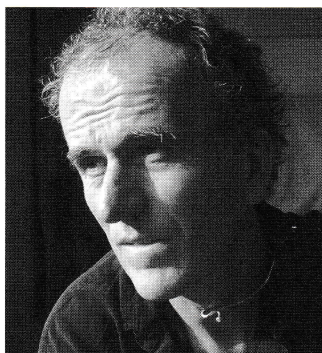
Griffiths has given lectures and courses on various musical topics and on libretto writing, invited by institutions ranging from the Munich Biennale to Harvard University. In 2002 he was made a Chevalier de l'Ordre des Arts et des Lettres. He lives in Manorbier, Wales, and New York with his wife, and has two sons.

The General (2007)

PAUL GRIFFITHS, libretto

Born 1947, Bridgend, Wales

Music by LUDWIG VAN BEETHOVEN



Paul Griffiths has supplied a program note:

In 1809, soon after the Austrian army had been defeated by Napoleon's forces at the Battle of Wagram, Beethoven accepted an invitation to write incidental music for a production of Goethe's heroic drama *Egmont* in Vienna, and produced his strongest work for the theatre after *Fidelio*:

a powerful overture, four symphonic movements as interludes, two songs and a threnody for the heroine Klärchen, and a melodrama (music to engage with the speaking voice) for *Egmont*. The incidental scores he wrote later are much less significant, though he did provide exceptional melodramas (among other pieces) for August von Kotzebue's *King Stephen* in 1811, and four years later orchestrated the slow movement of his *A flat piano sonata, Op.26*, for Johann Friedrich Duncker's *Leonore Prohaska*, which, like *Egmont*, concerns a war of liberation.

Goethe's *Egmont* is rarely presented now, these other plays probably never. Hence *The General*, an attempt to create a new context for Beethoven's contributions—many of them seldom heard in the concert hall—within a drama between actor and orchestra, a drama that will carry, for modern audiences, the weight of recent events. The protagonist is not a remote figure but a man of our own times: Roméo Dallaire, head of the U.N. peacekeeping mission in Rwanda in 1993-4, who could see catastrophe approaching, tried to prevent it, and was refused the means. He is the general. But his struggles—to support the endangered, to enlist the powers of the rich and privileged to protect the poor, not to ignore, by no means to ignore—are not his alone. These are our responsibilities, ours in general.

A project such as *The General* raises many questions. We may wonder how plausible it is to place Beethoven's music in a framework the composer could never have imagined—and how useful. Can this music speak to this story, and this story to this music? After all, Beethoven's *Egmont* music is powerful, progressive and massively optimistic, while the history of Rwanda fifteen years ago is one of brutality and indifference, and by no means only within the country's borders. Given such differences, we cannot end with the Victory Symphony Beethoven made to close *Egmont*, repeating the last, affirmative minute or so of the overture. Our conclusion has to be, rather, a choral hymn, a rarely performed late Beethoven piece for soprano, chorus and orchestra.

Other questions are voiced in the new words for this hymn, and still others in the music all through. For though Beethoven's *Egmont* score has triumph in its sights right from the overture, perhaps its overriding quality is that of hope, which is not only a consolation but also a challenge: hope that interrogates us, that makes its demands. Much has changed in the intervening two centuries, but not this hope, with which Beethoven so forcefully and so directly addresses us, his future—we who live, as he did, in a time of vast political disappointment, rapid technological advance, and incessant war. ■

Curious About an Upcoming LJS&C Concert?

Hear music samples & commentary
on our website!

Go to the concert page and click on the
Audio Preview logo.

AUDIO)))
PREVIEWS

www.lajollasympphony.com

Overture (from Egmont)

- No. 1 Song "A drum in the distance" (from *Egmont*)
- No. 2 Melodrama "One thing I learned" (from *King Stephen*)
- No. 3 Melodrama "Informants, spies" (from *King Stephen*)
- No. 4 Interlude 1 (from *Egmont*, Entr'acte 4)
- No. 5 Interlude 2 (from *Leonore Prohaska*, Funeral March)
- No. 6 Interlude 3/Melodrama "I could do something" (from *Egmont*, Entr'acte 1)
- No. 7 Interlude 4 (from *Egmont*, Entr'acte 2)
- No. 8 Interlude 5 (from *Egmont*, Clara's Death)
- No. 9 Melodrama (from *Egmont*, Melodrama)
- No.10 Song "Lost and despairing" (from *Egmont*)
- No. 11 Interlude 6 (from *Egmont*, Entr'acte 3)
- No. 12 Interlude 7 (from *King Stephen*, Solemn March)
- No. 13 Melodrama "I had nothing to say to these people" (from *King Stephen*)
- No. 14 Victory Symphony (from *Egmont*)
- No. 15 Finale (from *Opferlied*, Op.121b)

No.1 Song "A drum in the distance"

A drum in the distance,
A fife over here,
You're already moving
In tune with the war.
The centuries turn in
The grip of your fingers,
Your heart's beating fast,
Your blood's running hot:
A flood from the past has
You ready to act.

You know they're behind you,
An unending line,
Battalions marching
Through aeons of time.
The struggle, the combat
You see in each face,
But where will you find it:
The music of peace?

No.10 Song: "Lost and despairing"

Lost and despairing
And out on your own,
No-one to turn to,
You're spiralling down,

Sending out signals
And finding no help:
All you can ask
Is the bounty of hope.

No.15 Finale

The night is total, but be sure
A deeper darkness lies inside,
And when will come the morning?

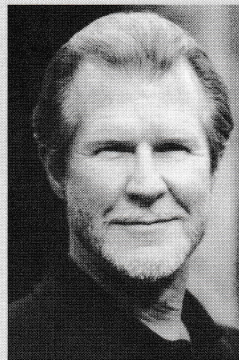
We are in peril; where's the cure?
And who will answer, who decide
To end the general mourning?

Yes, where's the light that will endure
To stop the species' suicide,
The beacon giving warning?

Can we still recognize the pure,
The uncorrupted hand to guide
More human ages dawning?

The LJS&C wishes to thank the
County of San Diego
Community Enhancement Program

for generously underwriting videotaping of this weekend's concert



Philip Larson
narrator

Philip Larson studied at the University of Illinois and received a degree in vocal performance. He was a founding member of the "Extended Vocal Techniques Ensemble," one of the first groups dedicated to the performance of vocal music featuring extended techniques. The quartet performed throughout the U.S., Europe and Canada. In 1977 Mr. Larson, with Edwin Harkins, founded [THE], a composing/performing duo that performed at Music Today in Tokyo, Paris Autumn Festival, the Darmstadt Ferienkurse, the Inter-Society for the Electronic Arts in Rotterdam, the Suzuki Theater Festival in Japan, the New Music America Festival in Chicago and PICA in Perth, Australia. They have collaborated with John Cage, Toru Takemitsu, Anthony Braxton, and media artist Vibeke Sorenson. As a concert soloist Mr. Larson has performed in New York, Boston, Chicago, Los Angeles, Paris, Tokyo, Munich, Lisbon, Cleveland, Bukarest and Warsaw appearing with Ensemble Intercontemporain, Cleveland Chamber Symphony, Handel and Haydn Society, Metropolitan Chamber Orchestra, red fish blue fish percussion ensemble, and Speculum Musicae. In addition Mr. Larson has, for many years, sung early music and continues today in performances with the Early Music Ensemble of San Diego. Mr. Larson is professor of music at the University of California San Diego. His recordings include the works of Iannis Xenakis, Anthony Davis, Roger Reynolds, and Chaya Czernowin.



Alexis Grenier
soprano

Alexis Grenier, a San Diego native, graduated from Oberlin Conservatory of Music in 2008, receiving both her bachelor's and master's degrees in vocal performance and opera theatre. Her most recent roles have included Adina in *L'elisir d'amore*, Laetitia in *The Old Maid and the Thief*, and Mere Marie in *Dialogues des Carmelites*.

Ms. Grenier was a 2007 winner of the La Jolla Symphony & Chorus Young Artists Competition and a winner in the Carmel Music Society's biannual vocal competition. She is currently studying acting as well as singing in San Diego and recently starred in the internet show pilot, "Jenn 2.0."

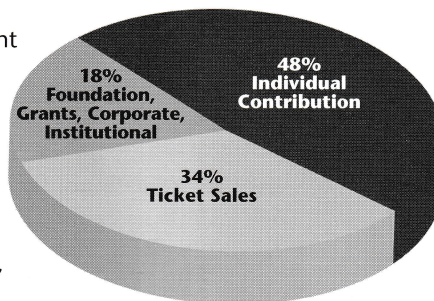
About La Jolla Symphony & Chorus

MISSION:

Rooted in San Diego for over 50 years, the La Jolla Symphony and Chorus enriches our lives through affordable concerts of groundbreaking, traditional and contemporary classical music.

DID YOU KNOW?

- LJS&C is a volunteer ensemble comprised of community members from all walks of life: scientists, lawyers, engineers, homemakers, students, and teachers, as well as professional musicians.
- LJS&C was founded in 1954 in the village of La Jolla by Peter Nicoloff, a conductor who assembled a small group of non-professional musicians "just for fun" and conducted them in what was modestly called an open rehearsal. Over the next half century, the organization grew to over 200 orchestra and chorus members.
- LJS&C became an affiliate of the UCSD Music Department under the direction of Thomas Nee in 1967 when the new campus opened. Concerts were split between Sherwood Auditorium and Revelle cafeteria on campus until Mandeville Auditorium opened in 1975.
- The Chorus has toured and performed in Poland, Czechoslovakia, Germany, Austria, Italy, France, Canada, and Mexico, and was proclaimed official cultural ambassador of San Diego in 2003 when it was the first Western chorus to perform in Bhutan.
- LJS&C has performed over 800 concerts in San Diego County and Baja California, premiered new works, commissioned pieces and made recordings.
- LJS&C is not University funded but a separate 501(c)3 non-profit corporation, relying on private donations, fundraising activities, grants, and ticket sales for its support.



**We Rely On
Your
Support.**

Thank You!

The DNA of Music

Saturday, June 6 at 8:00 pm
Sunday, June 7 at 3:00 pm
Mandeville Auditorium

Highlighted as one of the year's "five events of significance" in classical music!
— San Diego Union Tribune

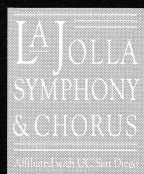
Special Guests



Laurinda Nikkel



Martha Jane Weaver



**Mahler's
Resurrection
Symphony**

La Jolla Symphony & Chorus 2008-2009 Season

HOPE

Steven Schick conducting

Gustav Mahler *Symphony No. 2 "Resurrection"*

Concert sponsor: Ida Houby & Bill Miller

Hear about this concert at:

AUDIO)))
PREVIEWS

www.lajollasympphony.com

858-534-4637 • www.lajollasympphony.com

SACRED VOICES SERIES

The Motet Project

LA JOLLA
SYMPHONY
& CHORUS
Affiliated with UC San Diego

Sunday, May 31, 2009 4:00 pm
St. James By-the-Sea, La Jolla

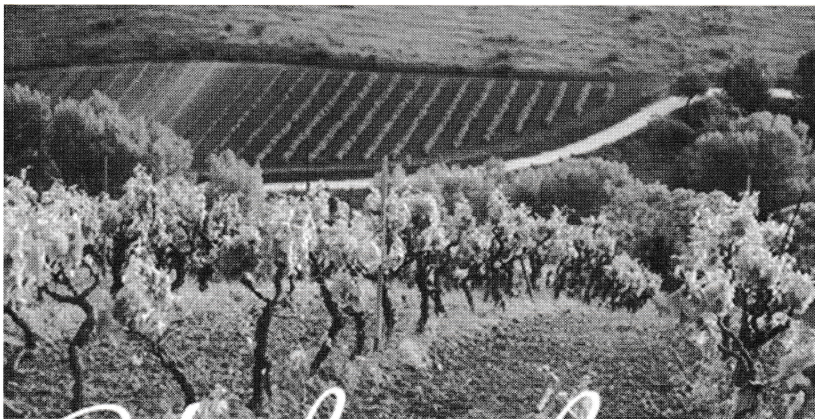


VICTORIA • MONTEVERDI • BACH • BRAHMS • STANFORD • HAMBRAEUS

Join Choral Director David Chase and the La Jolla Symphony Chorus in a final performance of The Motet Project, tracing the motet form through six composers from the Renaissance to the 20th century.

Concert Sponsor: Beda & Jerry Farrell

Advance tickets: 858-534-4637 • Online: www.lajollasympphony.com



Under the Tuscan Sun

La Jolla Symphony & Chorus
8th Annual Wine Tasting & Benefit
With Syndicated Wine Columnist
Robert Whitley

Saturday, May 16, 2009
2:00-5:00 PM

Del Mar home of Robert Engler & Julie Ruedi

RECEPTION
"BLIND" TASTING [Wines of Tuscany]
WINE RAFFLE

\$95 per person / \$180 per couple
After April 30: \$110 per person, \$200 per couple

LA JOLLA
SYMPHONY
& CHORUS
Affiliated with UC San Diego

Call 858-534-4637

Event limited to 100 guests

La Jolla
Symphony & Chorus
Association

Board of
Directors

2008-2009 Season

OFFICERS

Amee Wood
President

Liza Perkins-Cohen
Vice President

Jenny Smerud
Treasurer

George Anderson
Secretary

Gordon Clark
Dr. Joan Forrest
Marty Hambricht
Dr. Ida Houby
Stephen L. Marsh
Carolyn McClain
Cynthia Mendez
James R. Rosenfield
Brendi Rawlin

EX-OFFICIO

Eric Bromberger
Dr. David Chase
Steven Schick
Rand Steiger

HONORARY
MEMBERS

Eloise Duff
Dr. Anita Figueredo
Dr. Will Ogdon
David Parris
Jeanne Saier

MISSION STATEMENT

Rooted in San Diego for over 50 years, the La Jolla Symphony and Chorus enriches our lives through affordable concerts of ground-breaking, traditional and contemporary classical music.

LA JOLLA SYMPHONY CHORUS

Founded in 1965 by Patricia Smith

David Chase, *Choral Director*

Kenneth Bell, *Assistant Conductor*

Victoria Heins-Shaw, *Accompanist**
underwritten by Monique Kunewalder

Mea Daum, *Manager*

Marianne & Dennis Schamp, *Librarians*

Stewart Shaw, *Chorus Facilities*

SOPRANO

Megan Becker
Maureen Blinn
Julianne Burns
Frances Castle*
Sally Dean
Madison Donoghue
Clare Friedman
Marty Hambricht
Martha Hamilton
Ida Houby
Lauren Hruby
Anita Ip
Karen Johns
Donna Johnson
Karen Kakazu
Kathryn Kinslow
Jaime Korkos
Constance Lawthers
Justine Lee
Rebecca Lee
Mona McGorvin
Nancy Moore
Alessia Para
Hanna Rahimi
Amy Schick
Mitzi Sobash
Tracie Steele-Marshall
Jeanne Stutzer
Jennifer Timmons
Jessica Varnado
Mary Ellen Walther
Danielle Wiener
Joyce Yin

ALTO

June Allen
Kathy Archibald
Kim Burton
Diane Bushman
Peggy Clapp
Sandra Encalada
Karen Erickson
Karen Halseth
Vicki Heins-Shaw
Rachel Jansen
Fiona Livermore
Jaclyn Los Banos
Mary Beth Lutz
Susan Lutz**
Robin Mayfield
Minna Ng
Debby Park
Barbara Peisch
Satomi Saito
Marianne Schamp
Janet Shields*
Carol Slaughter
Joy Sworder
Susan Taggart
Arlene Watson
Amee Wood

TENOR

Colin Bloor
Max Chodos**
Sean Cody
Nathan Daum
Walter Desmond*
David Hingtgen
Sungho Jun
Peter Leavitt
Jim Macemon

Marty Marion
Myles Mayfield
Joe Mundy
Alex Nguyen
Allan Sohl
Dennis Turner
William Ziefle

BASS

Ken Bell**
John Beresford
C. Peter Brown
John Carpenter
Charles Carver
Joe DeMers
Paul J. Friedman
Peter Gourevitch
David Hertzell
Peter Jorgensen
Diego Jimenez
Michael Kaehr
Daniel Maloney
Steve Marsh
Morgan Miyazono
Gilbert Omens
Ray Park
Rich Parker
Dennis Schamp
Stewart Shaw*
Steve Shields
Otto Sorensen
Vincent Tedjasaputra
Mark Walters

**Section Leader*

***Staff Singers are partially
underwritten by a gift from
Steve and Janet Shields.*

LA JOLLA SYMPHONY ORCHESTRA

Founded in 1954 by Peter Nicoloff

Steven Schick, *Music Director*

R. Theodore Bietz, *Orchestra Manager*

Ulrike Burgin, *Orchestra Librarian*

Jacob Sokal, *Production Assistant*

VIOLIN I

David Buckley, *Co-Concertmaster*

Peter Clarke, *Co-Concertmaster*

Carol Bietz

Evon Carpenter

Alex Doo

Pat Gifford

Susanna Han

Yoon Ho

Sherman Ku

Gudrun Noe

Ina Page

Vidya Pai

Wendy Patrick Mazzerella

Jeanne Saier

Natalie Schenker

VIOLIN II

Gary Brown, *Principal*

Victoria Eicher, *Assistant Principal*

Susan Brown

Sun Choi

Eric Chung

Candace Davis

Joan Forrest

Judy Gaukel

Vivian Hur

Stephanie Kim

Igor Korneitchouk

Ralph Li

Jullie Matsuda

Nienke Moolenaar

Susan Park

Wendell Su

VIOLA

Daniel Swem, *Principal*

Nancy Swanberg, *Assistant Principal*

Matthew Brown

Loie Flood

Aristeo Lopez

Ashley Knutson

Euki Sawada

Sheila Podell

Meredith Rawls

Rachel Smyth

Cynthia Snyder

Jasmine Yu

CELLO

Peter Farrell, *Principal*

Max Fenstermacher, *Assistant Principal*

Katharina Brandl

Ulrike Burgin

Curtis Chan

Michelle Elliott

Caitlin Fahey

Sam Horodezky

Tim Kang

Andrew Ling

Erdis Maxhelaku

Terri Parsons

Clifford Thrasher

Carol Tolbert

Janet White

CONTRABASS

Christine Allen, *Principal*

Bryan Lowe, *Assistant Principal*

Lance Gucwa

Bill Childs

Leila DeViney

Stephen Gentillalli

FLUTE

Cathy McAllister, *Principal*

Erica McDaniel

PICCOLO

Erica McDaniel

OBOE

Carol Rothrock, *Principal*

Heather Marks

Brendi Rawlin

CLARINET

Sue Collado, *Principal*

Jenny Smerud

Fran Tonello

BASSOON

Tom Schubert, *Principal*

Jennifer Bleth

HORN

Cynthia MGregor, *Principal*

Kelley Coker, *Assistant Principal*

Ryan Beard

Jonathan Rudin

David Tuttle

TRUMPET

Ken Fitzgerald, *Principal*

Rachel Allen

TROMBONE

R. Theodore Bietz, *Principal*

Joe Moore

BASS TROMBONE

Andrew Moreau

TUBA

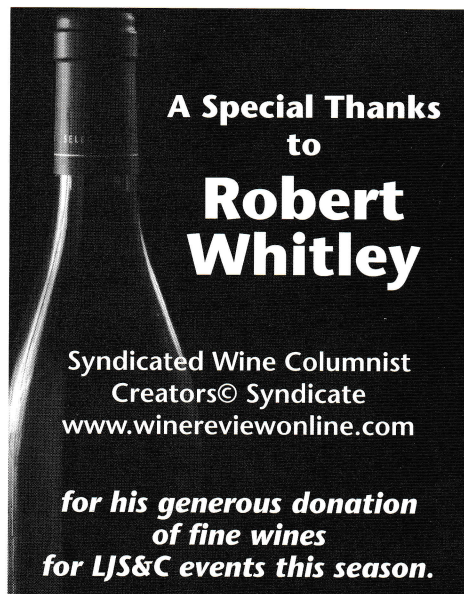
Kenneth Earnest

TIMPANI

Jonathan Hepfer

CONDUCTING ASSISTANT

Nicholas Deyoe



A Special Thanks
to
**Robert
Whitley**
Syndicated Wine Columnist
Creators© Syndicate
www.winereviewonline.com
for his generous donation
of fine wines
for LJS&C events this season.

CONTRIBUTORS

The La Jolla Symphony & Chorus Association Board of Directors expresses its deep gratitude to the Department of Music at UC San Diego for the generous support and assistance it continues to provide. The association would also like to acknowledge the generosity of its Chief Benefactress Therese Hurst, who upon her death in 1985 left her estate to the association providing an endowment. The Board of Directors also wishes to thank the following individuals, foundations, and organizations for their contributions in support of the 2008-2009 season.

LEADERSHIP CIRCLE

MAJOR SPONSOR

\$25,000+

City of San Diego,
Commission for Arts & Culture

SEASON UNDERWRITER

\$15,000+

Anonymous
County of San Diego,
Supervisor Pam Slater-Price
Department of Music, UCSD

ANGELS

10,000+

Michael & Nancy Kaehr
Amee Wood & Eric Mustonen

UNDERWRITER

\$5,000+

Barona Band of Mission Indians
Samuel & Katherine French Fund
Monique Kunewalder
Ida Houby & Bill Miller
Qualcomm Incorporated
Steven & Brenda Schick
UCSD-TV

SPONSOR

\$2,500+

Eric & Pat Bromberger
Gary & Susan Brown
Beda & Jerry Farrell
Drs. Joan Forrest & Michael Latz
Mandell Weiss Charitable Trust
Price Charities
Robert Engler & Julie Ruedi
Milton & Jeanne Saier
Dr. James Swift &
Suzanne Bosch-Swift
Robert Whitley & Diane Salisbury

BENEFACTOR

\$1,500+

Diane Bewley
Dr. Colin & Maxine Bloor
David Clapp & Gayle Barsamian
Dr. & Mrs. Curtis Chan
Donald & Frances Diehl
Sonya Hintz
Bobbie Hoder
Liza Perkins-Cohen &
Jonathan Cohen
Steve & Janet Shields

PATRON

\$1,000+

Richard Anderson
Gordon & Lauren Clark
Dr. & Mrs. Frank Dwinell
Dr. Bernard J. Eggertsen &
Florence Nemkov
Dr. & Mrs. Paul Friedman
Dr. Robert & Phyllis Galambos
Donald & Julie MacNeil
Steve Marsh
Dr. Marianne McDonald
Mary Nee
Tom & Barbara Peisch
Nolan & Barbara Penn
Scott & Jenny Smerud
SweetBay Foundation

SUSTAINER

\$500+

Daniel & June Allen
George & Sarilee Anderson
Ted & Carol Bietz
Dr. Duane & Denise Blickenstaff
Garrett Bowles
Cheryl Brown
Carolyn Chase
Design Perspective
Walt & Ann Desmond
Kenneth Fitzgerald
David & Patricia Gifford
Marty Hambricht
Rochelle Kline-Casey &
Glenn Casey
Dr. James & Lois Lasry
Carolyn McClain
Cynthia Mendez
Carol Plantamura
Richard & Glenda Rosenblatt
James R. Rosenfield
George M. Rothrock,
in memoriam
Richard Stern
Donald Yeckel

AFICIONADO

\$250+

Allyn & Charline Bridge
Janice & Nelson Byrne
Jesus Ceja
David & Ann Chase
Janet Chrispeels
Brenda & Preston Conklin
Mea & Gaelen Daum
Mr. & Mrs. Russell Duff
Dr. Zofia Dziewanowska

Kenneth Earnest
Noel & Victoria Eicher
F. F. D.
Thomas & Julia Falk
Fay Shwayder Foundation
Robert & Mary Hardy
Maryalys Hill
Samuel J. Horodezsky
Katherine Kaufman
Jeff Nevin
Carol Rothrock
Alex & Valerie Rubins
Thomas Schubert
David Smith
Joy & David Sworder
Cathy Thompson
Roland M. Varesko
Henry & Irene Weber

ASSOCIATE

\$100+

Anonymous
Dean & Nancy Abelon
Leona Adler
Michael & Christine Allen
Kenneth & Florence Armour
Henry & Susan Anthony
Mark & Sue Appelbaum
Marian Archibald
Bill Barry & Ellen Kulik
John Berecochea
Capt. & Mrs. Charles Bishop
Charles & Maureen Brown
Ulrike Burgin
Geoff & Shem Clow
Steven Constable
James Craft
Julia Croom
William D. Davis
Neil De Crescenzo
Nancy & Joel Dimsdale
Edward & Edith Drcar
Darrell & Dorothy Fanestil
Brian & Stephanie Ferneyhough
Carol Gable
Katherine Gould-Martin
Julian Grafa
John & Mary Griffin
William & Sharon Griswold
Peter Gourevitch
Ed & Bonnie Harkins
Derek Healy
Nancy & Bill Homeyer
Dr. Horacio & Sonia Jinich
David Kimball
Ray & Jan Kociencki

Edith Kodmur
Sally & Norman Kroll
Liwerant Family Fund
Carl & Claudia Lowenstein
Dr. Cecil Lytle
Mona McGorvin & James Olesky
Holly McMillan
Marion Mettler
Bill Modisette
Roy & Barbara Moreau
Jim & Sally Mowry
Wolfgang & Gudrun Noe
Pauline Oliveros
Gilbert & Dorothy Omens
George & Elinor Osborn
Ina Page
Catherine Palmer
Thelma & David Parris
Warren & Mary Margaret Pay
Sean & Kathryn Peisert
Robert & Susan Peisert
Judy & Alan Perry
Robert & Mary Porter
Crosby Roper
Barbara Rosen
Vanya Russell
Michael & Shirley Santoro
Brian Schottlaender
Ellen Warner Scott
Andrew Shao
Karl & Jan Sharpless
William & Georgiana Simmons
Laurie Smith
Stuart & Carol Smith
Irene Soloman
Capt. & Mrs. W.T. Stutzer
Mark & Susan Taggart
Cliff Thrasher
Richard & Susan Ulevitch
Mary Ellen & Peter Walther
David & Elke Wurzel

MATCHING FUND

SPONSORS

Qualcomm
Merrill Lynch
Intuit

THERESE HURST MUSICAL HERITAGE SOCIETY

Steve Marsh
Amee Wood & Eric Mustonen
David Smith

The La Jolla Symphony & Chorus Association is a 501(c)3 non-profit corporation. Contributions to the Association are tax-deductible.

Those wishing to support the Association may send their donations to the Association office at
9500 Gilman Drive, UCSD 0361, La Jolla, CA 92093-0361 or phone the office at (858) 534-4637.

The LJS&C makes every effort to ensure that our contributors' names are listed accurately. If you find an error, please let us know and we will correct it.

This list is current as of April 8, 2009.

The DNA of Music

LA JOLLA SYMPHONY & CHORUS
2008-2009 SEASON

Steven Schick, Music Director
David Chase, Choral Director

Mandeville Auditorium, UCSD



red fish blue fish

TIME

Steven Schick conducting

Bedrich Smetana

Toru Takemitsu

Johannes Brahms

Special Guest:

Concert Sponsor:

November 1-2, 2008

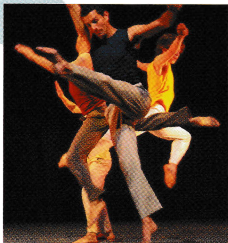
Vltava "The Moldau"

From me flows what you call Time

Symphony No. 2

red fish blue fish

Eric & Pat Bromberger / Gary & Susan Brown



Lux Boreal

MOTION

Steven Schick conducting

Evan Ziporyn

Dmitri Shostakovich

Igor Stravinsky

Special Guests:

Concert Sponsor:

December 6-7, 2008

Frog's Eye WEST COAST PREMIERE

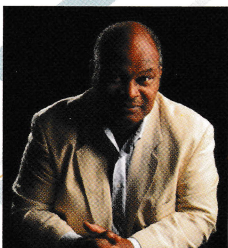
Cello Concerto No.1

Petrushka

Evan Ziporyn, Lux Boreal Contemporanea Danza,

Margaret Zhou, Young Artists Winner

Drs. Joan Forrest & Michael Latz



Cecil Lytle

HOME

Steven Schick conducting

Aaron Copland

Anthony Davis

Rick Snow

Ottorino Respighi

Special Guest:

Concert Sponsor:

February 7-8, 2009

Lincoln Portrait

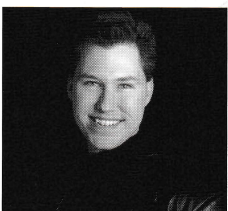
Amistad Symphony WORLD PREMIERE

Darwin Portrait NEE COMMISSION

The Pines of Rome

Cecil Lytle, narrator

Dr. Robert Engler & Julie Ruedi



Chad Frisque

PERSPECTIVE

David Chase conducting

Claude Debussy

Igor Stravinsky

Special Guests:

Concert Sponsor:

March 14-15, 2009

La damoiselle élue

Oedipus Rex

Mary Jaeb, Victoria Robertson, Chad Frisque,

Martha Howe, Lorant Najbauer, Kenneth Bell

Michael & Nancy Kaehr



Maya Beiser

PASSION

Steven Schick conducting

Ludwig van Beethoven

Edward Elgar

Beethoven/Paul Griffiths

Special Guests:

Concert Sponsor:

May 2-3, 2009

Elegy

Cello Concerto

The General U.S. PREMIERE

Maya Beiser, Philip Larsen, Alexis Grenier

Ida Houbby & Bill Miller



Laurinda Nikkels

HOPE

Steven Schick conducting

Gustav Mahler

Special Guests:

Concert Sponsor:

June 6-7, 2009

Symphony No. 2 "Resurrection"

Laurinda Nikkels, Martha Jane Weaver

Ida Houbby & Bill Miller

Saturday Concerts 8:00 pm

Sunday Concerts 3:00 pm

TICKET OFFICE: 858-534-4637

ONLINE: www.lajollasympphony.com



Major funding for LJS&C is provided by the City of San Diego Commission for Arts and Culture, and the County of San Diego.



Hokanson | associates

Your family. Your dreams. Your partners along the way.

*Saluting the harmonious DNA of
La Jolla Symphony and Chorus
in your fifty-fourth
season of excellence...*

Hokanson | associates

Family Wealth Management

*Selected One of America's Top 100 Wealth Advisors
– Worth Magazine, October 2006, 2007, and 2008*

Contact us for a free consultation.

201 Lomas Santa Fe Drive, Suite 360, Solana Beach, CA 92075

Tel: 858 755 8899 Fax: 858 755 4449

info@hokansonassociates.com www.Hokansonassociates.com